

Specsheet

Prowise Touchscreen Ten G3 SE



The Prowise Touchscreen Ten G3 SE offers an excellent balance between user experience and high-quality specifications, specially designed for those looking for quality at a competitive price. The user's needs were carefully considered for the development of the Prowise Touchscreen Ten G3 SE, focusing on the most important functionalities. This interactive whiteboard shares the same powerful core that you are used to from other Prowise touchscreens - with the same writing experience, software tools, and security options - but in an optimised design.

On the Prowise Touchscreen Ten G3 SE, you use our educational software Prowise Presenter and the MDM software package Prowise Screen Control for free to centrally manage your interactive whiteboard remotely. The development of Prowise Presenter and Prowise Screen Control has been certified by the BSI, the global authority in the field of cyber security.

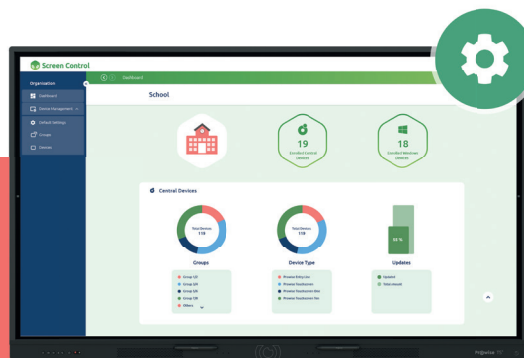
“So far, Prowise is the only education software manufacturer to have received such a certification.”

Source: www.bsi.bund.de



Education software Prowise Presenter

- ✓ Writing, erasing, typing
- ✓ Wallpapers, images, videos, 3D
- ✓ Interaction with devices
- ✓ Hundreds of educational practise tools
- ✓ Quiz module



MDM software Prowise Screen Control

- ✓ Pushing apps
- ✓ Installing updates
- ✓ Switching on and off remotely
- ✓ Safety settings
- ✓ Take over the screen remotely
- ✓ Specially developed for interactive whiteboards



Impressive image and sound quality

Geniet in Android én de OPS-module van prachtig 4K-beeld en ruimtevullend geluid.

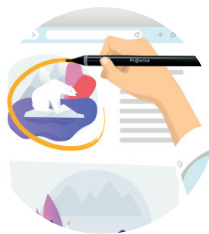
- ✓ 4K/Ultra HD IPS
- ✓ 178° viewing angle
- ✓ Zero bonding, Anti Glare Pro
- ✓ 2.0 Audio Soundbar
- ✓ 6x wide-area microphones



Excellent writing experience

Pen to paper, smooth and precise

- ✓ 2 pens
- ✓ Pens write simultaneously in 2 colours
- ✓ Palm recognition
- ✓ Windows Ink compatible
- ✓ 40 touchpoints
- ✓ Prowrite infrared technology



Annotate

Take notes on any website, PDF or input source.



Palm recognition

Rest your palm on the screen while you write.

Effortless connection

Integrated USB-C port

All the benefits of USB-C

Thanks to the USB-C port, your interactive whiteboard has a built-in docking station. You only need one cable for: Audio, data, video, charging, touch, internet

- ✓ Power (100 W)
- ✓ Supportive standards:
 - USB 3.2 gen 1
 - USB Touch
 - DisplayPort 1.2
 - Internet (100 Mb/s)

Wireless

Screen casting

Share your screen on the Prowise Touchscreen from any device or even from multiple different devices at the same time. Fully wireless, good quality, fast, can be secured with PIN code, no additional costs or complicated installations.

- ✓ AirPlay - 10 screens and control via TouchControl app
- ✓ Chromecast - 10 screens and control via TouchControl app
- ✓ Reflect - simultaneously casting and controlling 10
- ✓ Miracast

Educational apps and tools



Indispensable apps

- ✓ Microsoft Teams
- ✓ Google Meet
- ✓ Skype
- ✓ Zoom
- ✓ Netflix
- ✓ Spotify
- ✓ Youtube

Classroom favourites

- ✓ Birthday cake
- ✓ Memory
- ✓ Mind map
- ✓ Flashcards
- ✓ Bus sums
- ✓ Line of numbers
- ✓ Group creator
- ✓ Name picker

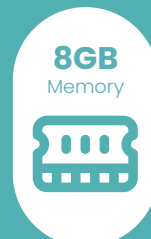
Performance & Stability

Fast and enough memory

- ✓ Android 13.0
- ✓ Storage 32GB (expandable with SD card)
- ✓ Memory 8GB

Wifi 6

- ✓ 250% faster than Wi-Fi 5
- ✓ No separate module
- ✓ Performance and stability



Prowise Central, control your digital board without a computer or PC module

Prowise Central includes everything you need to get started with your digital board in the classroom right away. No complicated installation or configuration required.



Work quickly and efficiently



Launch your apps with one click

The Prowise Appstore only displays validated and secure apps, without adverts or inappropriate content.



Access to your files, whenever and wherever

It's easy to log into your Prowise account on your touchscreen, giving you access to all your linked cloud accounts.



Display other screens in the classroom

With Airplay, Chromecast or Miracast you can screencast up to 10 screens from student devices to your interactive whiteboard at the same time.



Prefer Google's operating system?

Thanks to Prowise's Google EDLA certification, you can choose how to work on your digital board: either with the custom-made Prowise Central operating system, or with the Google-certified Android environment, which includes access to the Google Play Store™.



Google EDLA

You just need to log into your Google account, and all your favorite Google apps are at your disposal. If you work on your personal device with the same account, you'll find your work immediately on the desktop of your Prowise touchscreen.

TouchGREEN

Your Prowise touchscreen.
Our responsibility.



Longer life span

We are so confident in the lifespan of our screens that we now offer an 5-year warranty.



You determine the power consumption

Thanks to the three power modes, you can determine the power consumption of your Prowise touchscreen yourself.



Responsible packaging

Our touchscreens are packaged in 98% recyclable packaging material. After installation, we dispose of it responsibly ourselves.

Extra options

Prowise MOVE-camera

Distance learning

- ✓ Webcam
- ✓ Teams, Meet, Skype, Zoom
- ✓ 2.0 Soundbar and 6 microphones



Learning through motion with Move-app

- ✓ Play games without touching the Prowise touchscreen
- ✓ Improves the learning outcomes
- ✓ Is in line with the children's experiences

Prowise PC-module

- ✓ Windows 11 Professional
- ✓ Without external cables
- ✓ Intel vPro Technology (optional)
- ✓ Powerful Intel processor
- ✓ Intel® Iris® XeGraphics
- ✓ Lightning-fast performance



Prowise lift system

- ✓ Ideal height and location
- ✓ Safe and energy efficient
- ✓ Only one cable
- ✓ Patented brake system
- ✓ CE and GS certified
- ✓ Turn the screen into a touch table



Prowise Neo Whiteboard Extension Kit

- ✓ Four-panel whiteboard
- ✓ High-quality protective layer
- ✓ Magnetic
- ✓ Five years Full warranty



Technical specifications

PW.1.17065.1003, PW.1.17075.1003, PW.1.17086.1003

Display

Bezel colour	Sandblasted aluminium (black)
Dimensions	65, 75 and 86 inch
Panel type	A-grade Ultra HD LED – IPS
Resolution	3840 x 2160 @ 60 Hz
Glass panel	Anti-reflection
Display bonding technology	Zero bonded technology
Hardness glass	Mohs 7 (9H)
Aspect ratio	16:9
Contrast ratio	1200:1 (typ.)
Dynamic contrast ratio	5000:1
Brightness	450 cd/m2 typ
Colour depth	10 Bit (1.07B)
Viewing angle	178°
Lifespan	50.000 hours

Touch-Type

Type	Prowrite infrared Technology
Multi-Touch	Yes (40 Points)
Multi-Color Writing	Yes
Touch precisie	1 mm
Auto-Calibration	Yes
Resistant to sunlight	Yes
Supporting OS	Windows 8.1/10/11 / Linux / Mac OS X / Android
Pen-on-paper writing experience	Yes

Touch refresh rate	≥200Hz
Pen dock	Yes

Sound	
Speakers	2.0 sound (2 speakers)
Front Speakers	2 x 20W
Total power amplifiers	95W

Microphone	
Type	Microphone array
Number of microphones	6
Auto switch (Windows/Central)	Yes
Can be switched off	Yes

Prowrite infrared Technology	
Number of pens	2
Writing in multiple colours simultaneously	Yes
Writing in multiple thicknesses	Yes
Smart object selection	Yes
Palm recognition	Yes

Prowise Central	
CPU	High-End (Quad-Core + Quad-Core)
GPU	High-End (Octa-core Mali)
Supported operating systems	Prowise Central / Google EDLA / non-OS
Android version	Android 13.0

Storage	32GB (Optional 128GB)
Memory	8GB
Over-the-Air Updates (OTA)	Yes (5 years of support)
Motion sensors	Yes (1 PIR sensor)
Ambient light sensor	Yes

Accessories	
Number of pens	2 passive pens
Extra pen points	Yes
Remote control	Yes, including Batteries
Wi-Fi antennas	2x
Wiper	Optional
100 x 100 Vesa mount	Optional

Connections	
HDMI Out 2.1 (4K@60Hz)	1x
HDMI 2.1 (CEC, ARC, HDCP 2.3)	1x
HDMI 2.1 (CEC, HDCP 2.3)	2x
USB-C (full function)	1x (100W power, USB, video, audio, touch, LAN)
VGA (1920 x 1080 @60 Hz)	1x
Audio In (VGA)	1x (3,5 mm Mini-Jack)
Headphone	1x (3,5 mm Mini-Jack)

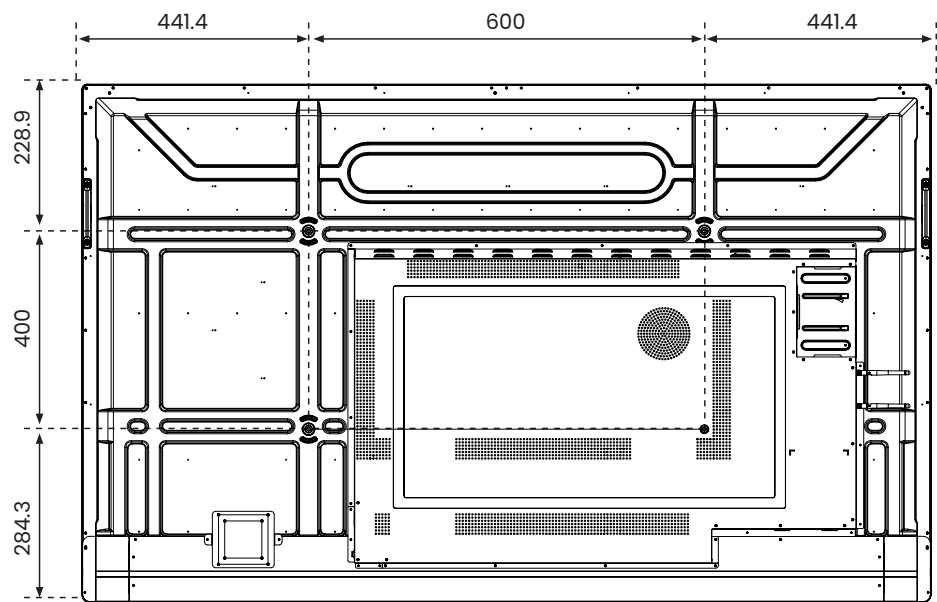
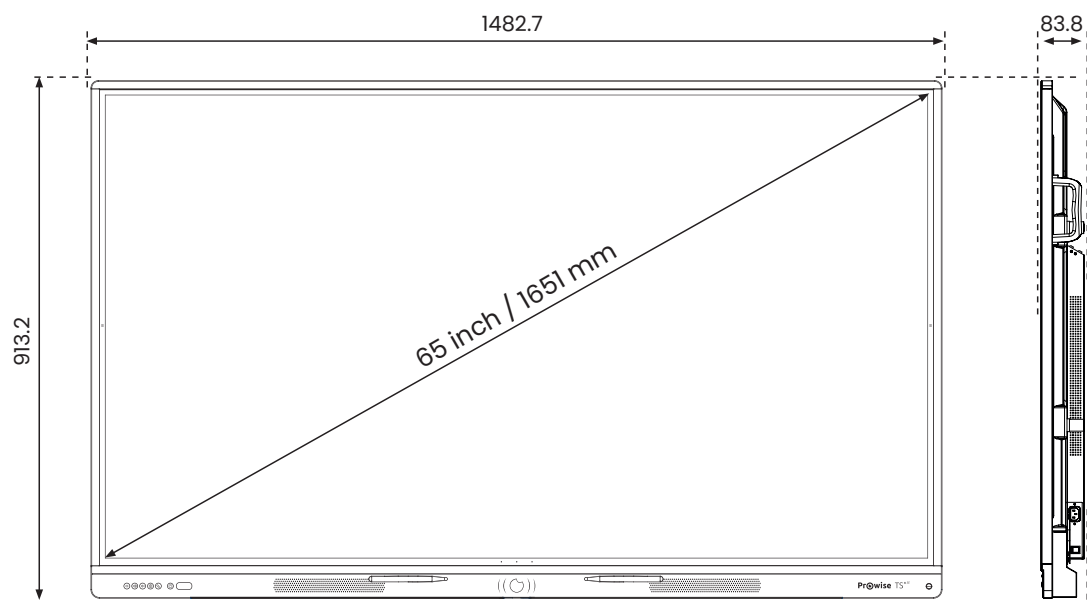
Microphone In	1x (3,5 mm Mini-Jack)
Digital audio output SPDIF	1x TOSLink optical
RS232 operation	1x DB9 Male
IP232 operation	Yes, via LAN
USB-B-Touch (USB 3.2)	2x
USB 2.0	1x (Central)
USB-A 3.2 Gen 1	2x (switchable Central / OPS)
LAN Port IN/OUT	2x (RJ45, 1000 Mb/s)
Including Wi-Fi	Yes, integrated Wi-Fi module
Wi-Fi Standard	802.11ax- Wi-Fi 6
Bluetooth Standard	5.2
Mini SD card reader	1x Max storage expansion of 128GB (FAT32)
PC module port	Yes, 80 pins OPS port

	65"	75"	86"
General Information			
Power supply	~ 100-240 V (50/60Hz)		
Energy consumption - Energy saver	68 W	81 W	117 W
Energy consumption - Energy Star	120 W	142 W	180 W
Energy consumption - Dynamic	175 W	212 W	308 W

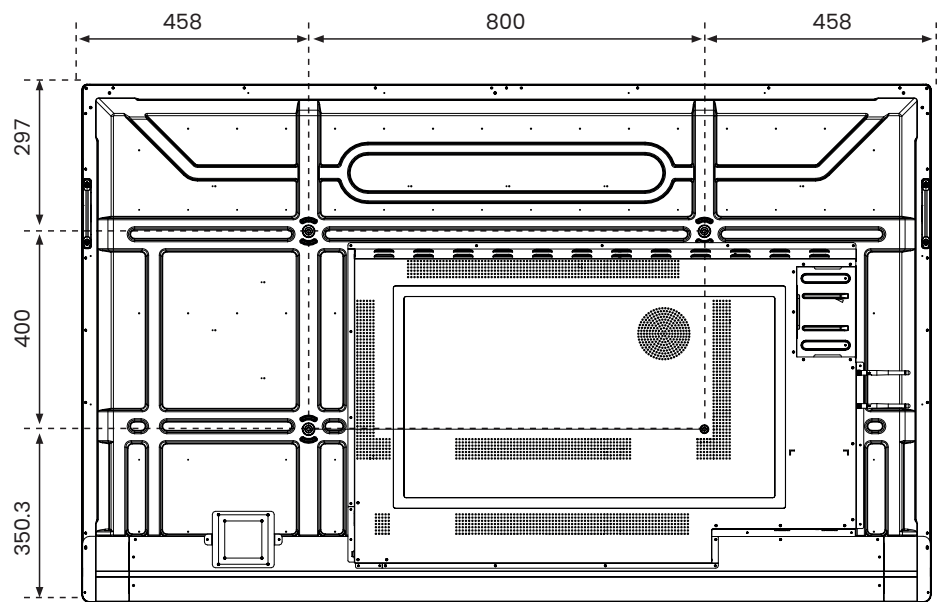
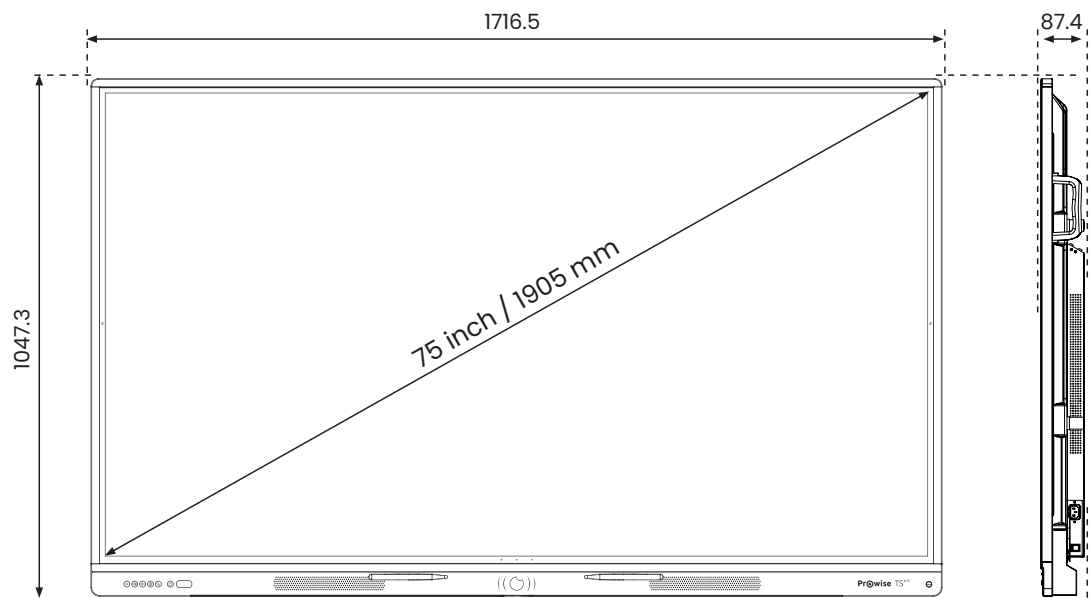
Stand-by energy consumption	≤ 0,5 W			
Gross weight	46 KG	62 KG	77.5 KG	
Net weight	38.5 KG	53.8 KG	66.5 KG	
Screen dimensions (WxHxD)	1482,7 x 913,2 x 83,8 mm	1716,5 x 1047,3 x 87,4 mm	1961,8 x 1185,3 x 87,4 mm	
Dimensions package (WxDxH)	1640 x 1010 x 185mm	1860 x 1125 x 185mm	2095 x 1265 x 185 mm	
VESA standard	VESA 600 x 400 mm	VESA 800 x 400 mm	VESA 800 x 600 mm	
VESA mount for external devices (optional)	VESA 100 x 100 mm			
Certificats	CE: EMC + LVD / WEEE / RoHS / REACH / Ecodesign / GS / Energy Star / PSTI / UKCA			
Warranty	5 years standard			

Environmental conditions	
Operating temperature	0 °C up to 38 °C / 32 up to 100 °F
Storage temperature	-20 °C up to 60 °C / -4 up to 140 °F
Storage Humidity	10% up to 90%
Usage Humidity	10% up to 90%
Maximum duration of use	16 hours per day

65 inch



75 inch



86 inch

