

Specsheet

Prowise Neo Lift Systems



Unlock the full potential of your touchscreen with the Prowise Neo Lift Systems. Designed with innovation, accessibility and durability in mind, the Prowise Neo Lift ensures that your touchscreen is effortlessly positioned at the desired height, angle and location. Developed entirely in Europe, by Prowise, our lift systems are tested and certified to the latest and highest safety and sustainability standards.

Just the way you want it!

For ultimate flexibility, choose the Prowise Neo Mobile Lift to not only adjust the height of the touchscreen but also move it effortlessly to another location. Prefer an interactive workspace? With the Prowise Neo Table Lift, you can easily tilt the touchscreen for collaborative learning. More in favor of a fixed setup? Then the Prowise Neo Wall Lift ensures that the screen is always at the right height for teachers and students.



Our lift systems make your touchscreen solution more inclusive. They are ADA compliant, making them ideal for wheelchair users.

Prowise Neo Lift Systems

Mobile Lift

Position the touchscreen at the desired height and location.

- ✓ Conveniently operated via the foot pedals or Prowise Central on the touchscreen.
- ✓ Suitable for touchscreens from 55" to 98".
- ✓ High quality double safety wheels.
- ✓ Integrated cable chain, including power and internet cable.

Wall Lift

Position the touchscreen at the desired height, fixed in one location.

- ✓ Conveniently operated via the foot pedals or Prowise Central on the touchscreen.
- ✓ Suitable for touchscreens from 55" to 98".
- ✓ Cables or obstacles on the wall? With our extension kit we can place the lift further away from the wall.
- ✓ Integrated cable chain, including power and internet cable.

Table Lift

Position the touchscreen at the desired height, angle, and location.

- ✓ Conveniently operated via the foot pedals, remote control, or Prowise Central on the touchscreen.
- ✓ Suitable for touchscreens up to 65".
- ✓ High-quality double safety wheels.
- ✓ Integrated cable chain, including power cable.

Safety first

The Prowise Neo Lift Systems have been designed from the start to be the safest. They undergo the most rigorous tests to ensure your and your pupils' safety.



Did you know that we test our Wall and Mobile lifts...

- ✓ ...on an inclined platform in the highest position with a 86" touchscreen, whiteboards and forces applied from the back and front?
- ✓ ...we test our lifts while adding 750 kg of weight for 24 hours?

The Prowise Neo Lift System can handle this with ease!

Innovative modular system

We have completely redesigned the concept of mounting. All our lift systems are made up of separate modules that can be combined to create a specific set up. Our modular approach has two big advantages:

- ✓ Reduced packaging dimensions, which means transport and storage space can be minimised with 60%. This reduces our carbon footprint and results in cost efficiency.
- ✓ Flexibility in terms of installation requirements: have the environmental conditions changed? We can change the configuration of the lift system to meet your needs.

Sustainability

We only use high quality materials. This makes the Prowise Neo Lift our most sustainable lift to date!

- ✓ Less than 5% plastic used in all our lift modules*
- ✓ 100% recycled packaging
- ✓ Packaging dimensions reduced by 60%
- ✓ Including a five-year warranty



< 5%



100%



60%



5 years

*Only in the wheel covers and cable chain, this is recycled plastic.

Compatible with your Prowise touchscreen

Our lift systems are fully integrated with Prowise Central, the operating system of your Prowise touchscreen. This means that you can operate the lift not only via the foot pedals, but also via the Prowise Central menu on your touchscreen.



Complete your solution

You can complete your solution with the following products and accessories:

Touchscreen

Prowise touchscreens: 100% customised to the needs of education. High in quality, low in price. Including a 5-year warranty.



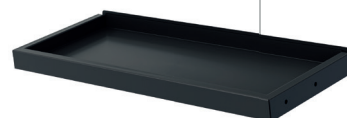
Whiteboards

- ✓ Four-sided whiteboard
- ✓ Mounting via VESA brackets, fully integrated with the lift system
- ✓ High-quality protective enamel layer
- ✓ Magnetic
- ✓ 5 years warranty



Keyboard tray

- ✓ Storage space for:
 - Keyboard
 - Mouse
 - Remote control
 - Pens
- ✓ 5 years warranty



Technical specifications

PW.1.21001.00011, PW.1.21001.00012, PW.1.21001.0017

	Prowise Neo Wall Lift	Prowise Neo Mobile Lift	Prowise Neo Table Lift
Suitable for	All Prowise touchscreens, maximum dimensions VESA mount 400 x 400 up to 1000 x 600 mm		All Prowise touchscreens up to 65". VESA mount dimensions 400 x 200 to 600 x 600
Stroke length	950 mm		Touchscreen position upright: 825 mm Touchscreen position table mode: 925 mm
Maximum load	150 kg		65 kg
Speed of the lift	35 mm/s loaded		
One plug solution	es, 230V connection for touchscreen available in lift. Including power and internet cable.	Yes, 230V connection for touchscreen available in lift. Including power cable.	
Power	100–240V AC 50–60Hz (universal)		
Stand-by power consumption	1 Watt		
Duty cycle columns	10% – 2 minutes of uninterrupted operation at full load followed by a break of 18 minutes		
Soft-start and soft-stop	Yes		
Collision detection	Yes, sensor in lift detects shocks		
Noise level	Low < 55 dB (A)		
Protection against overload (EOP)	Yes		
Material	Steel		
Colour	RAL 9005 and RAL 7015		
Keyboard storage (option)	Yes, with the Prowise Neo Keyboard Tray		Yes, with the Prowise Neo Keyboard Tray (Q4 2025)
Whiteboard kit (optie)	Yes	No	
Foot control	Yes		
Control via remote control	No	Yes	
Touchscreen control via Prowise Central	Yes, with included USB cable		
Certifications	CE, GS	CE	
Warranty	5 year		

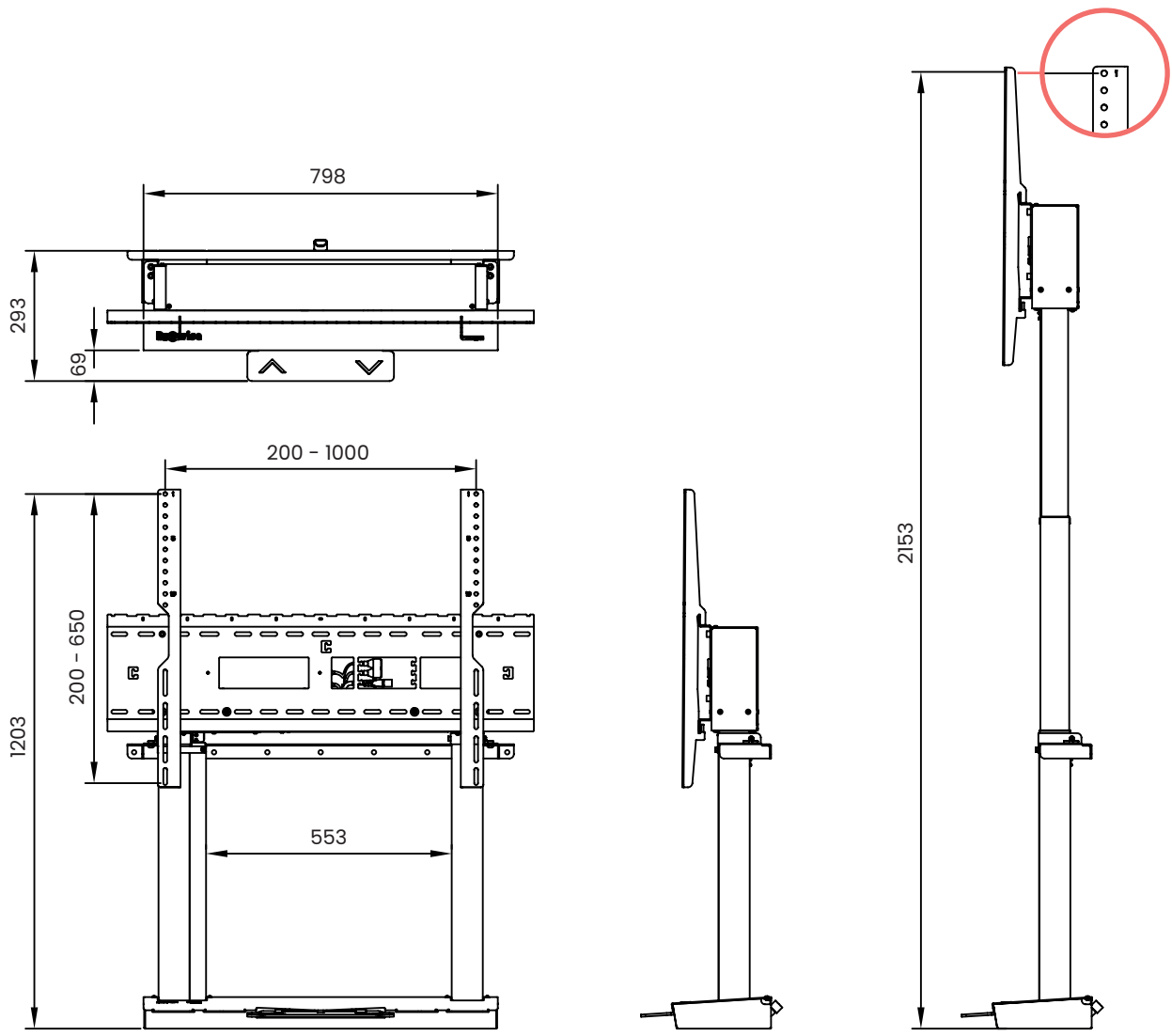
Technical specifications

PW.1.21001.00011, PW.1.21001.00012, PW.1.21001.0017

	Prowise Neo Wall Lift	Prowise Neo Mobile Lift	Prowise Neo Table Lift
Dimensions ground surface (WxDxH)	Main Module: 797 x 292 x 932 mm Wall Bracket Module: 870 x 120 x 57 mm	Main Module: 797 x 292 x 932 mm Mobile Wheel Base: 960 x 786 x 1001 mm	Table Module: 575 x 292 x 556 mm Mobile Wheel Base: 740 x 734 x 1001 mm
Gross weight	Main Module: 52.9 kg Wall Bracket Module: 2.0 kg	Main Module: 52.9 kg Mobile Wheel Base: 18.9 kg (excl. counter weight)	Table Module: 35 kg Mobile Wheel Base: 14.6 kg
Net weight	Main Module: 47.4 kg Wall Bracket Module: 1.6 kg	Main Module: 47.4 kg Mobile Wheel Base: 16.3 kg (excl counter weight)	Table Module: 32.5 kg Mobile Wheel Base: 12.4 kg
Dimensions of the total packaging (WxDxH)	Main Module: 1010 x 240 x 970 mm Wall Bracket Module: 912 x 138 x 50 mm	Main Module: 1010 x 240 x 970 mm Mobile Wheel Base: 995 x 175 x 830 mm	Table Module: 300 x 800 x 600 mm Mobile Wheel Base: 770 x 190 x 800 mm

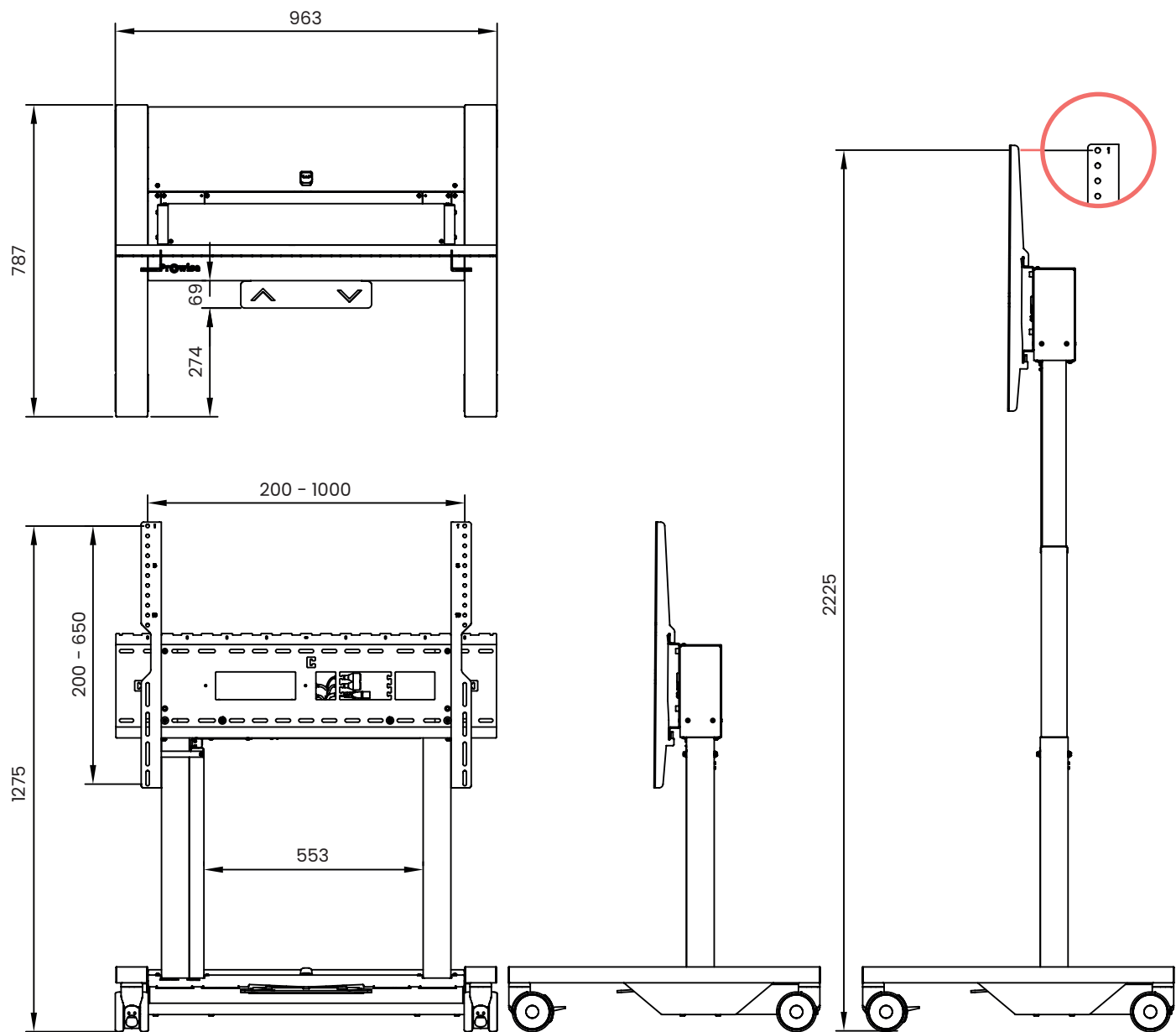
Dimensions Wall Lift

All dimensions are in millimeters



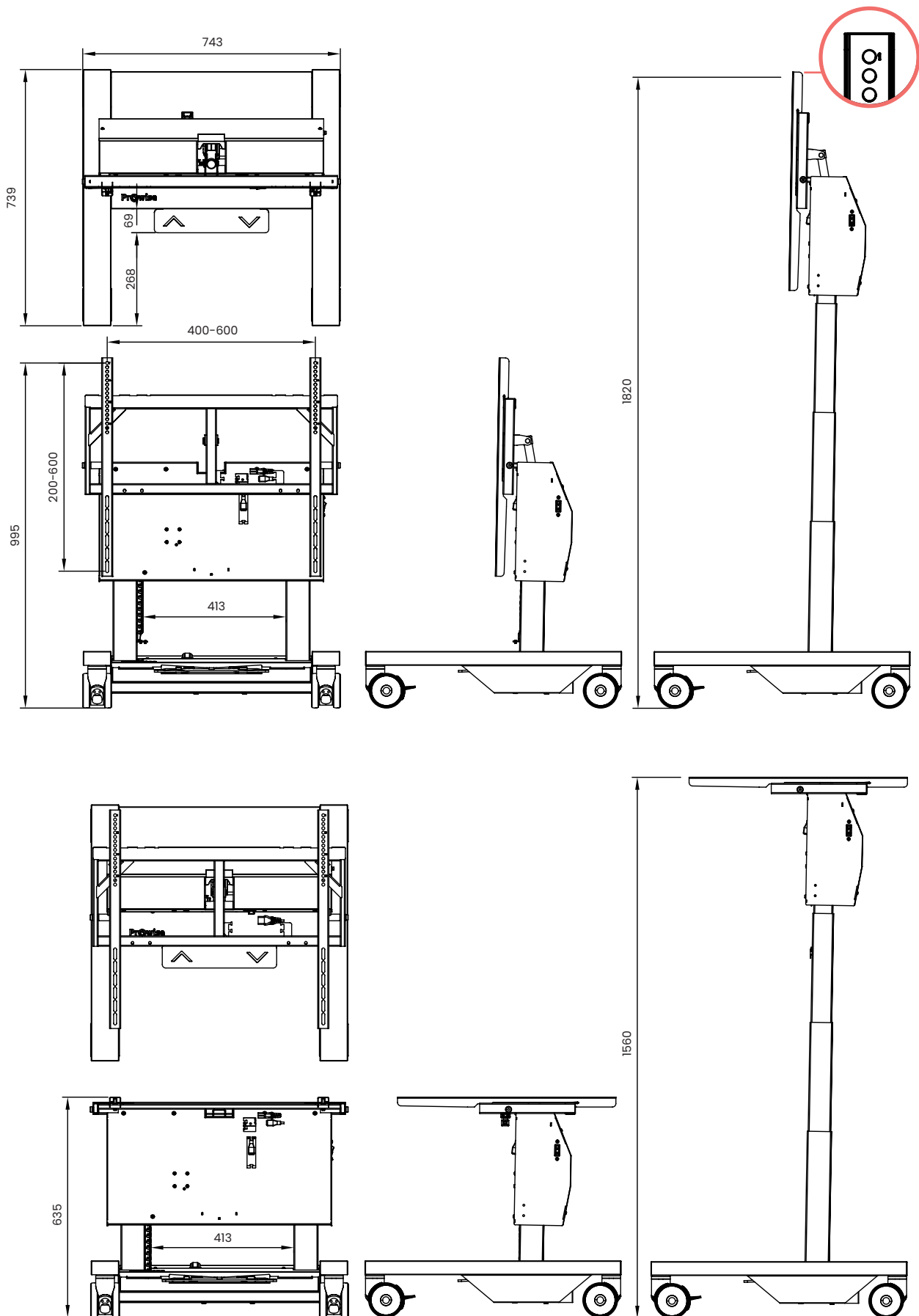
Dimensions Mobile Lift

All dimensions are in millimeters



Dimensions Table Lift

All dimensions are in millimeters



Neo Wall Extension Kit

If your Prowise Neo Wall Lift needs to be mounted further away from the wall, our wall extension kits can help. Often more space is needed if you want to mount your wall lift in a position where there's a cable duct on the wall or floor. Within the range of Prowise Neo Lift Systems, we can solve this.



Complete Kit

If there is a cable duct running over the wall, or if there are other reasons why the Prowise Neo Wall Lift needs to be placed further away from the wall, the Wall Extension Kit – Complete is the right choice. This kit consists of:

- ✓ **Wall Extension Top Bracket**
This will place your Prowise Neo Wall Lift 75 mm away from the wall.
- ✓ **Wall Extension Bottom**
This bottom piece will fill up the gap on the floor (between the lift and the wall).

Top Bracket

If there is a cable duct above the floor and the Neo Wall Lift needs to be placed further away from the wall, the Wall Extension Kit – Top Bracket can be used. The extension kit places your lift 75 mm away from the wall. The gap to the wall is then covered by the cable duct.

Technical specifications

PW.1.21001.0005, PW.1.21001.0007

	Complete	Top Bracket
Suitable for	Prowise Neo Wall Lift	
Certifications	CE (certified in combination with lift)	
Warranty	5 year	
Gross weight	5.1 kg / 11.24 lbs	2.0 kg / 4.40 lbs
Net weight	4.5. kg / 9.92 lbs	1.7 kg / 3.7 lbs
Dimensions package (WxDxH)	950 x 200 x 90 mm / 37,4 x 7.9 x 3.5 Inch	910 x 200 x 40 mm / 35.8 x 7.9 x 1.6 Inch

Dimensions Wall Lift + Extension kit

All dimensions are in millimeters

