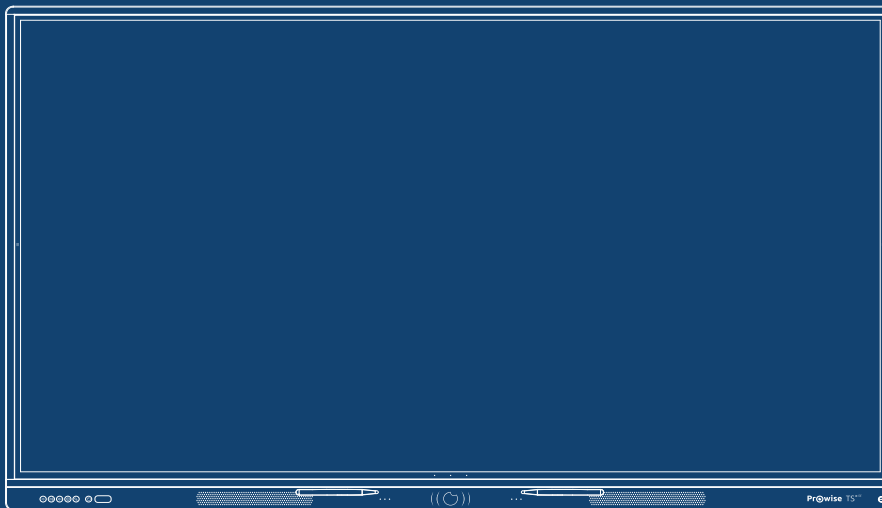


EN

DE

FR

NL



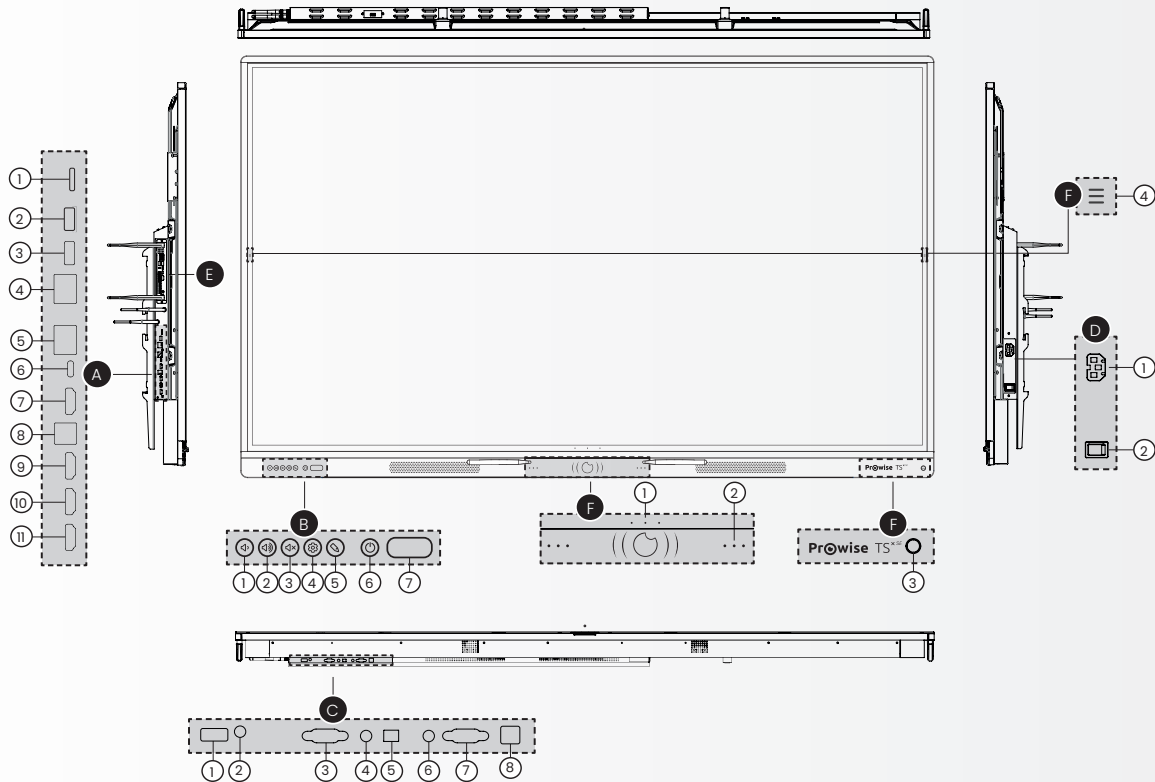
Quick Start Guide

Prowise Touchscreen Ten G3 SE

PW.1.17065.1003 / PW.1.17075.1003 / PW.1.17086.1003

Prowise

Buttons and connections



A Ports left side

- 1 SD card reader
- 2 USB 3.2 Gen1 Type A
- 3 USB 3.2 Gen1 Type A
- 4 Port LAN-IN/OUT (RJ45)
- 5 Port LAN-IN/OUT (RJ45)
- 6 USB Type C
(Video+ Audio + 100W power + Touch + LAN)
- 7 HDMI Output 2.1
- 8 USB 3.0 Type-B (Touch port for HDMI)
- 9 HDMI 2.1 Type A (HDCP2.3, ARC & CEC)
- 10 HDMI 2.1 Type A (HDCP2.3 CEC)
- 11 HDMI 2.1 Type A (HDCP2.3 CEC)

B Buttons front side

- 1 Volume -
- 2 Volume +
- 3 Volume mute
- 4 Settings
- 5 Whiteboard
- 6 ON/OFF button
- 7 IR sensor + Light sensor

C Ports bottom

- 1 USB 2.0 Type A (Central)
- 2 Microphone IN
- 3 RS232 serial port
- 4 Audio Port - Headphones
- 5 S/PDIF OUT
(optical digital audio port)
- 6 VGA Audio input
- 7 VGA IN (1920x1080p @60Hz)
- 8 USB 3.0 Type-B
(Touch port for VGA)

D AC input and Main switch right

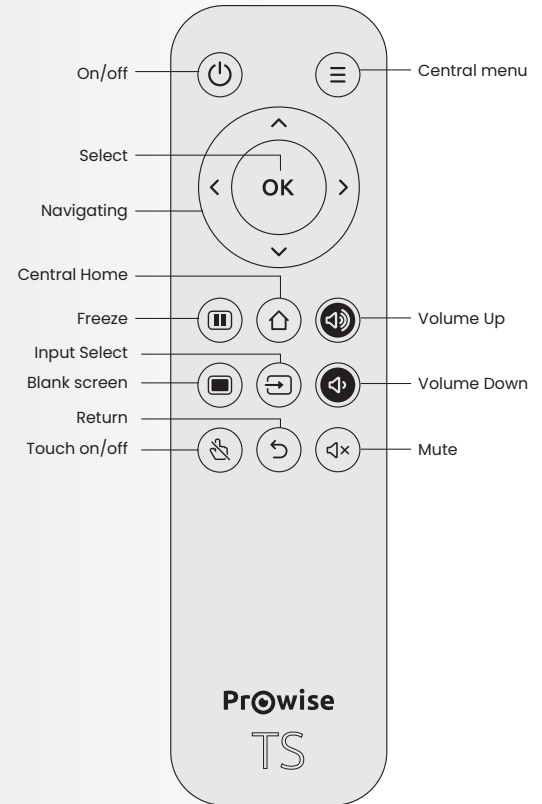
- 1 AC input
- 2 Main switch

E OPS slot left side

F Buttons and sensors front

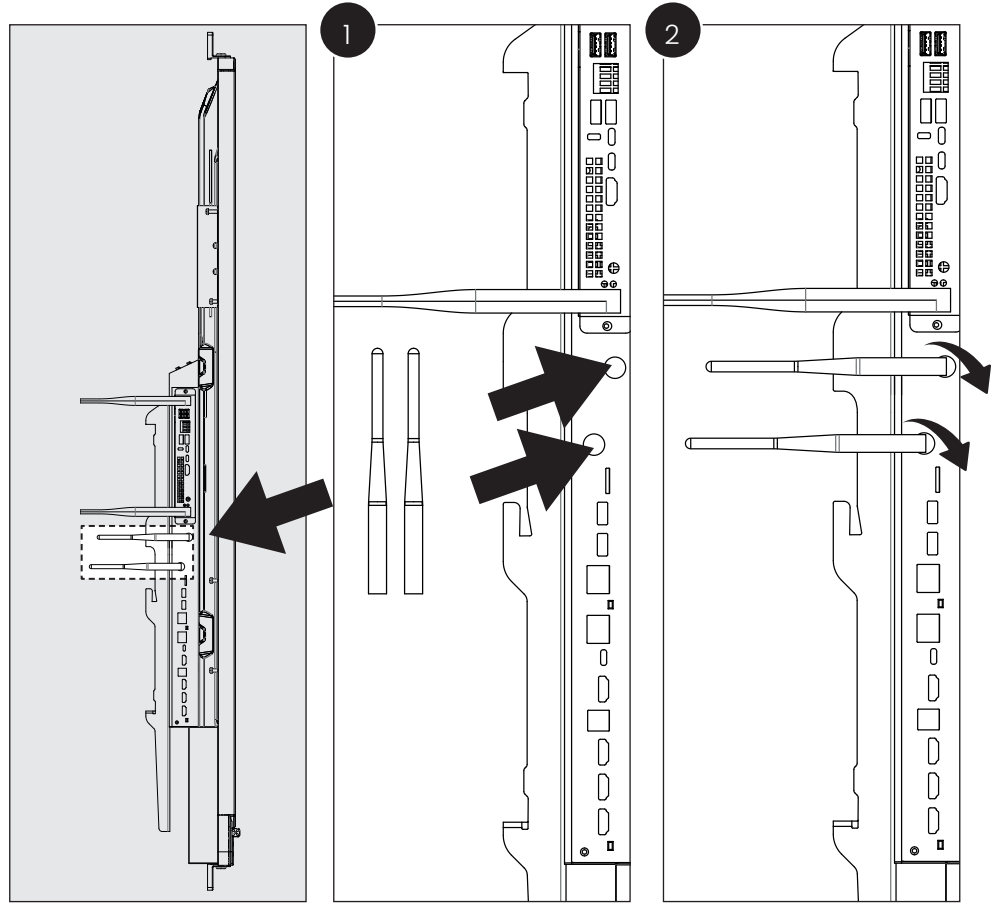
- 1 Adjustable buttons
- 2 Microphones
- 3 Proximity sensor
- 4 Menu buttons

Remote control



02	EN
06	DE
10	FR
14	NL

Wi-Fi Antennas installation procedure



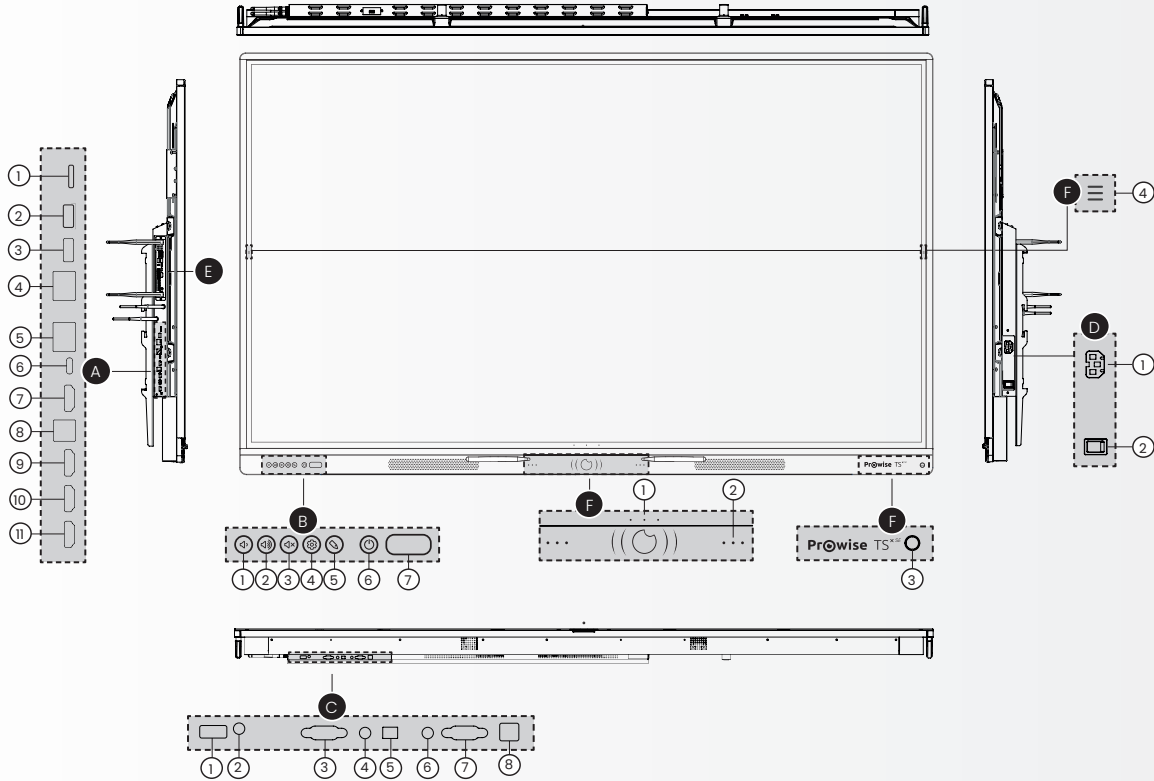
02 EN

06 DE

10 FR

14 NL

Tasten und Anschlüsse



A Ports linke Seite

- 1 SD-Kartenleser
- 2 USB 3.2 Gen1 Typ-A
- 3 USB 3.2 Gen1 Typ-A
- 4 LAN-EIN/AUS port (RJ45)
- 5 LAN-EIN/AUS port (RJ45)
- 6 USB Type C
(Video+ Audio + 100W power + Touch + LAN)
- 7 HDMI Ausgang 2.1
- 8 USB 3.0 Typ-B (Touch-Port für HDMI)
- 9 HDMI 2.1 Typ-A (HDCP2.3, ARC & CEC)
- 10 HDMI 2.1 Typ-A (HDCP2.3 CEC)
- 11 HDMI 2.1 Typ-A (HDCP2.3 CEC)

B Buttons

- 1 Lautstärke -
- 2 Lautstärke +
- 3 Volume mute
- 4 Settings
- 5 Whiteboard
- 6 ON/OFF button
- 7 IR-Sensor + Lichtsensor

C Ports an der Unterseite

- 1 USB 2.0 Typ-A (Central)
- 2 Mikrofone EIN
- 3 Serielle RS232-Schnittstelle
- 4 Audio Port - Headphones
- 5 S/PDIF OUT
(optical digital audio port)
- 6 VGA Audio input
- 7 VGA IN (1920x1080p @60Hz)
- 8 USB 3.0 Type-B
(Touch port for VGA)

D AC-Eingang und Hauptschalter rechts

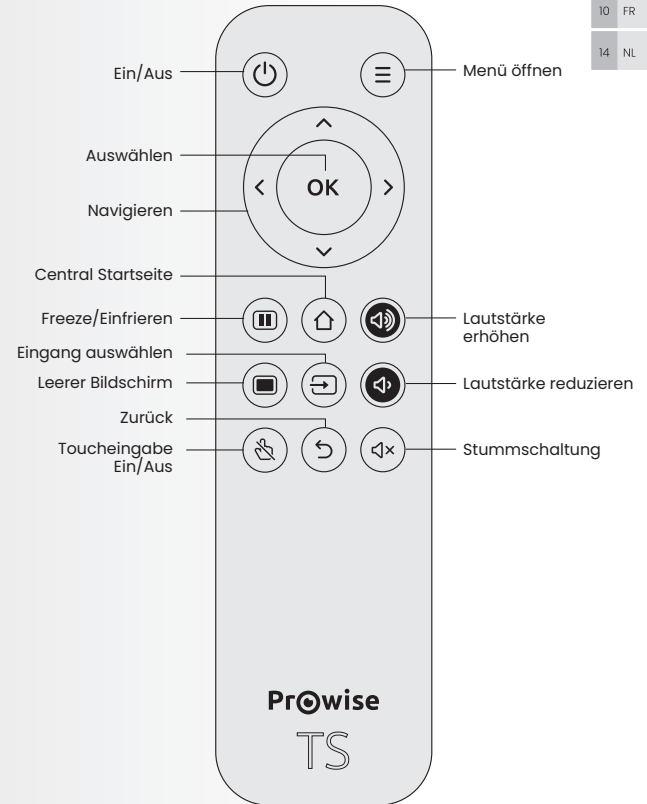
- 1 AC-Eingang
- 2 Hauptschalter

E OPS-Steckplatz linke Seite

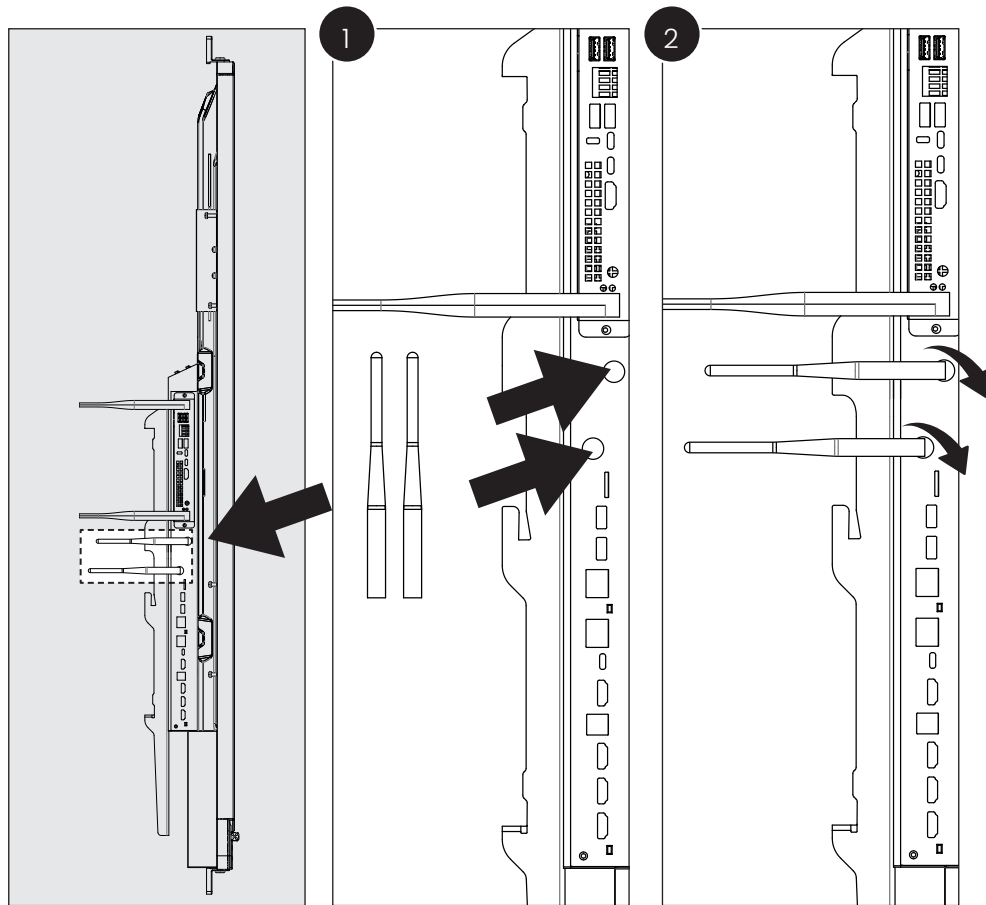
F Schaltflächen und Sensoren Vorderseite

- 1 Einstellbare Schaltflächen
- 2 Mikrofone
- 3 Näherungssensoren
- 4 Menütasten

Fernbedienung



WLAN-Antennen Installationsverfahren



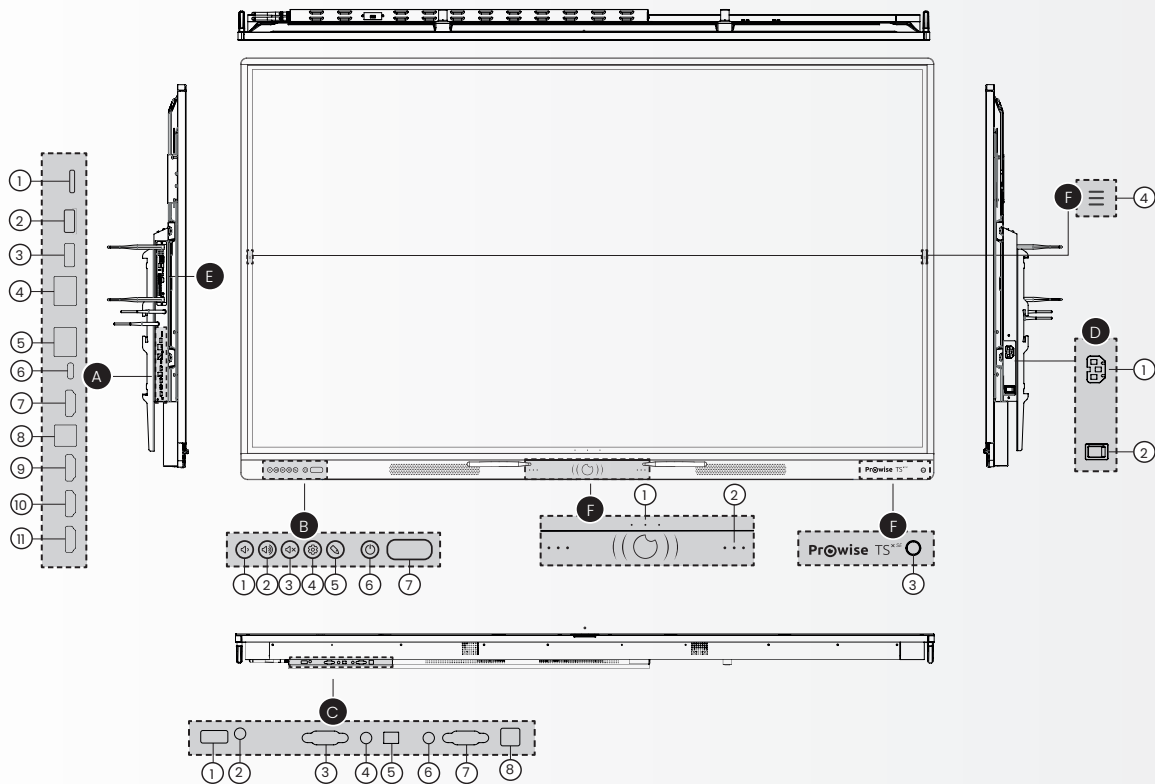
02 EN

06 DE

10 FR

14 NL

Boutons et connexions



A Ports côté gauche

- 1 Lecteur de carte SD
- 2 USB 3.2 Gen1 Type A
- 3 USB 3.2 Gen1 Type A
- 4 Port LAN-IN/OUT (RJ45)
- 5 Port LAN-IN/OUT (RJ45)
- 6 USB Type C
(Video+ Audio + 100W power + Touch + LAN)
- 7 Sortie HDMI 2.1
- 8 USB 3.0 Type-B (port Touch pour HDMI)
- 9 HDMI 2.1 Type A (HDCP2.3, ARC & CEC)
- 10 HDMI 2.1 Type A (HDCP2.3 CEC)
- 11 HDMI 2.1 Type A (HDCP2.3 CEC)

B Buttons

- 1 Réduction du volume
- 2 Augmentation du volume
- 3 Bouton muet
- 4 Bouton des paramètres
- 5 Annoter
- 6 Bouton d'alimentation
- 7 Capteur IR + Capteur de lumière

C Ports côté inférieur

- 1 USB 2.0 Type A (Central)
- 2 Entrée microphone
- 3 Port série RS232
- 4 Sortie audio – Casque
- 5 Sortie audio numérique optique S/PDIF
- 6 Entrée VGA Audio
- 7 Entrée VGA (1920x1080p @60 Hz)
- 8 USB 3.0 Type-B
(port Touch pour VGA)

D Entrée CA et Commutateur principal à droite

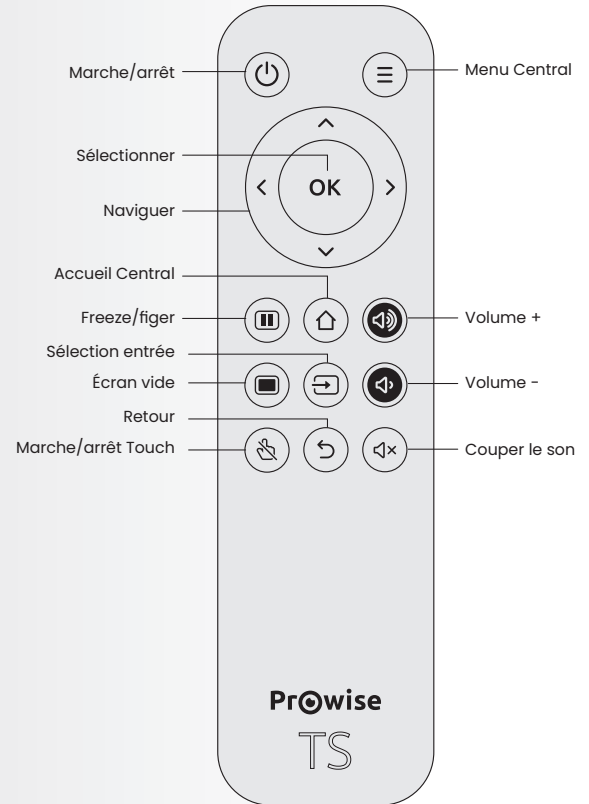
- 1 Entrée CA
- 2 Commutateur principal

E Emplacement OPS côté gauche

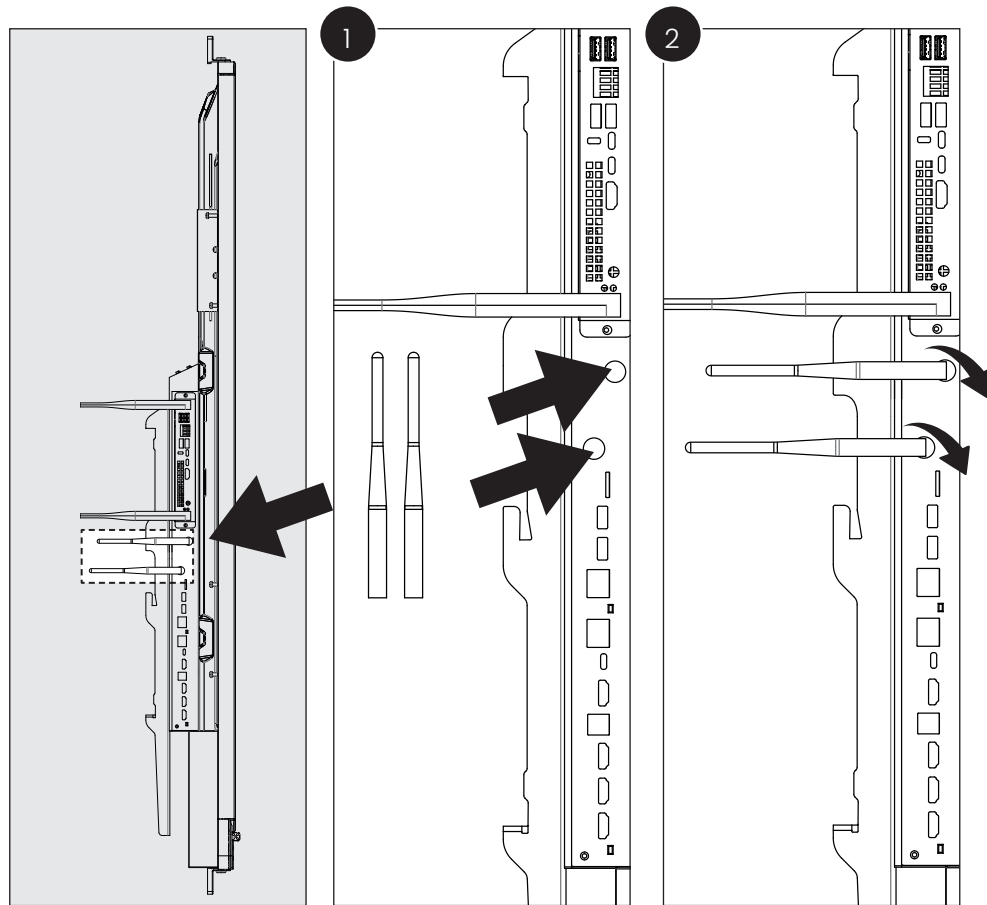
F Boutons et capteurs en façade

- 1 Boutons réglables
- 2 Microphones
- 3 Capteur de proximité
- 4 Boutons Menu

Télécommande



Procédure d'installation antennes Wi-Fi



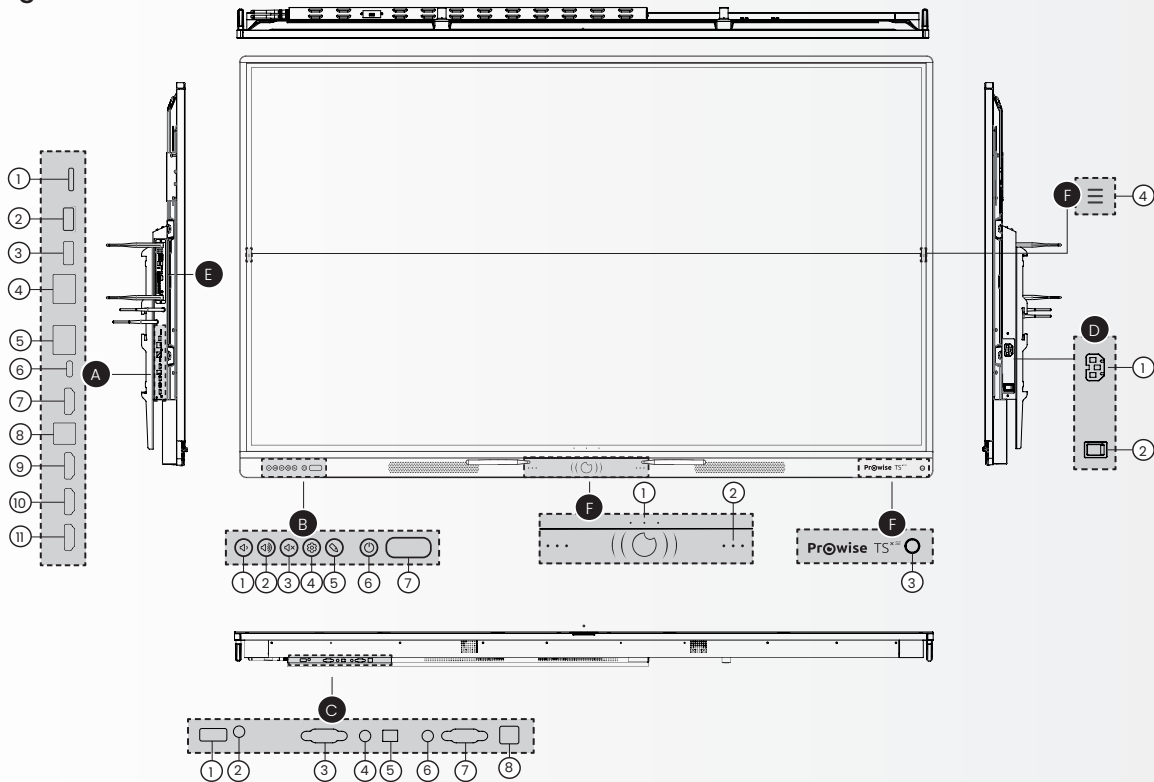
02 EN

06 DE

10 FR

14 NL

Knoppen en aansluitingen



A Poorten linkerzijde

- 1 SD kaart reader
- 2 USB 3.2 Gen1 Type A
- 3 USB 3.2 Gen1 Type A
- 4 LAN-IN/UIT poort (RJ45)
- 5 LAN-IN/UIT poort (RJ45)
- 6 USB Type C
(Video+ Audio + 100W stroom + Touch + LAN)
- 7 HDMI uitgang 2.1
- 8 USB 3.0 Type-B (touch poort voor HDMI)
- 9 HDMI 2.1 Type A (HDCP2.3, ARC & CEC)
- 10 HDMI 2.1 Type A (HDCP2.3 CEC)
- 11 HDMI 2.1 Type A (HDCP2.3 CEC)

B Buttons voorzijde

- 1 Volume -
- 2 Volume +
- 3 Volume dempen
- 4 Instellingen
- 5 Annotatie modus
- 6 AAN/UIT knop
- 7 IR sensor + licht sensor

C Poorten onderzijde

- 1 USB 2.0 Type A (Central)
- 2 Microfoon IN
- 3 RS232 seriële poort
- 4 Audio poort - Hoofdtelefoon
- 5 S/PDIF UIT
(optische digitale audio poort)
- 6 VGA Audio input
- 7 VGA IN (1920x1080p @60Hz)
- 8 USB 3.0 Type-B
(Touch poort voor VGA)

D AC-ingang en Hoofdschakelaar rechts

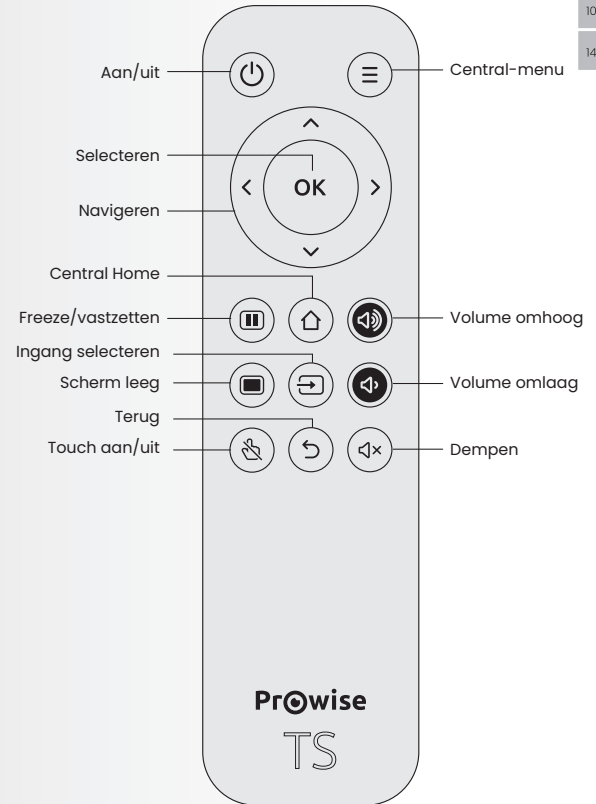
- 1 AC-ingang
- 2 Hoofdschakelaar

E OPS-sleuf linkerzijde

F Knoppen en sensoren voorzijde

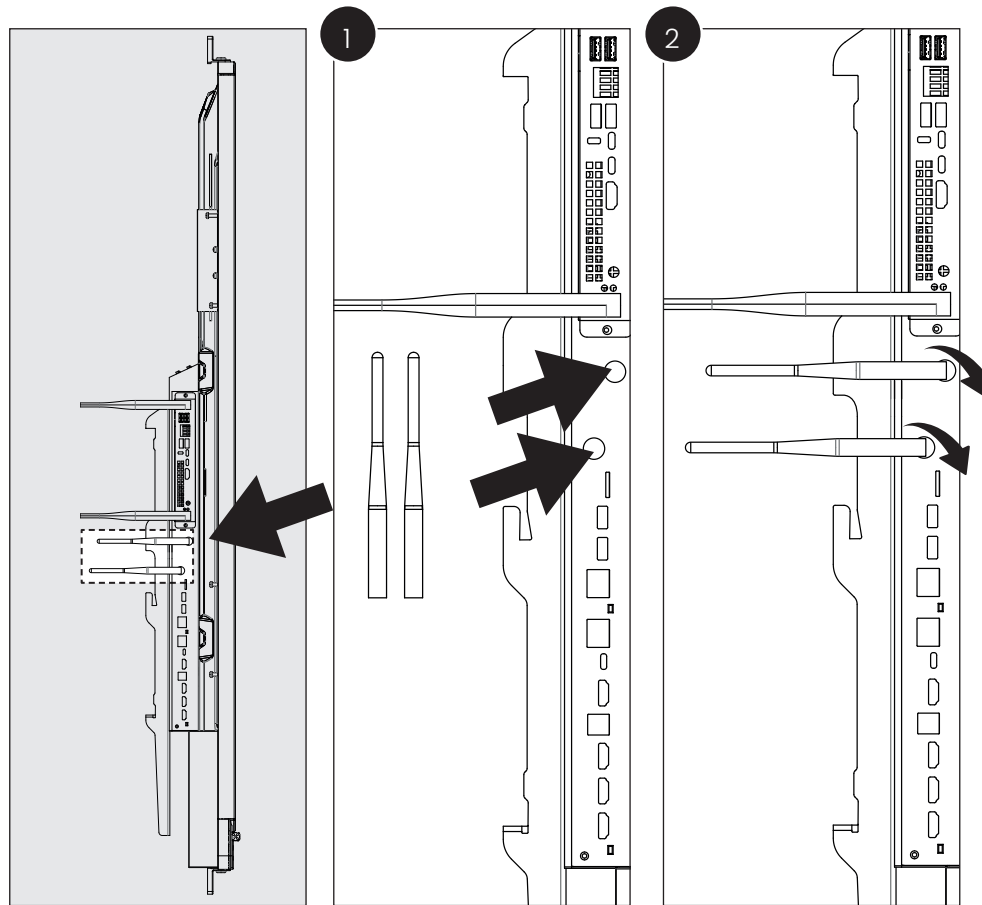
- 1 Instelbare knoppen
- 2 Microfoons
- 3 IR sensor
- 4 Menu knoppen

Afstandsbediening



02	EN
06	DE
10	FR
14	NL

Wi-Fi Antennes installatieprocedure





Prowise

EMPOWERING EDUCATION

Scan this QR code for more
information and online
documentation



www.prowise.com