

EN

DE

NL

FR

IT

ES

PT

NO

DA

SV

FI

CY

PL

CS

SK

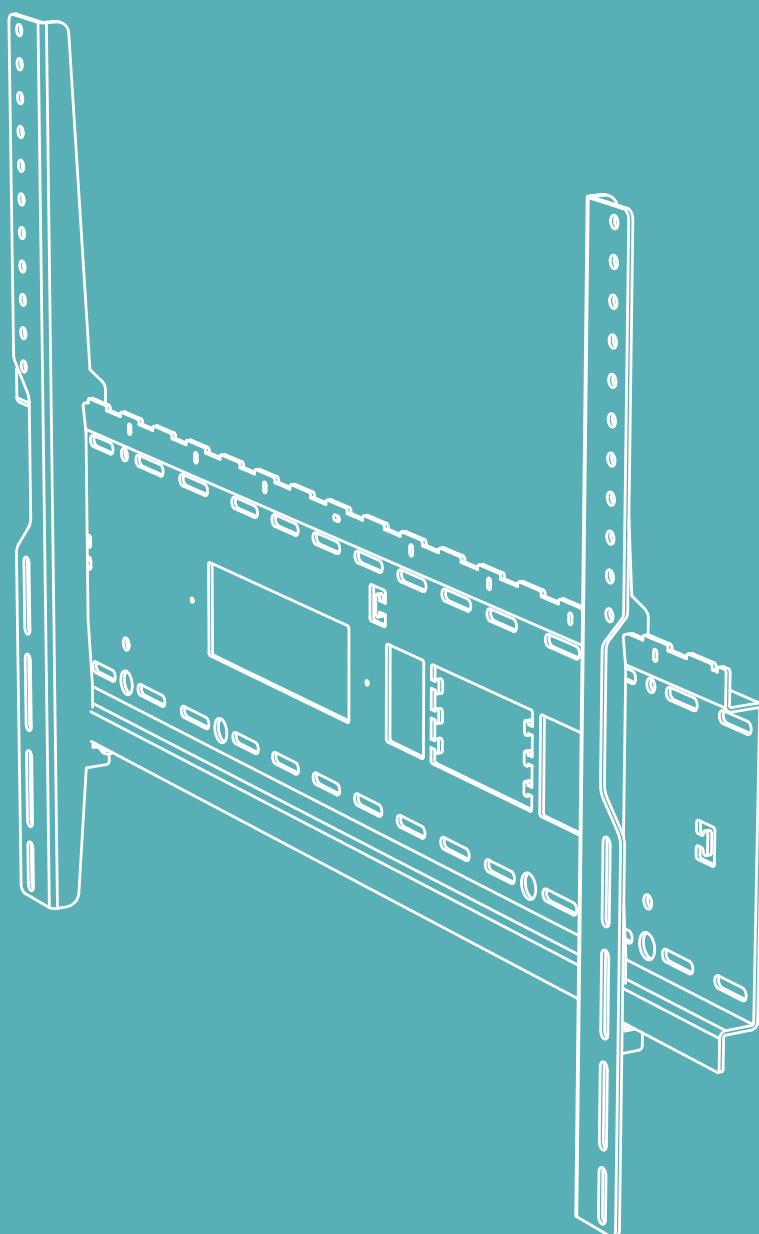
RO

HU

LT

LV

ET



User Manual

Prowise Neo VESA Wall Mount

PW.1.21001.0002

Prowise

Installation guidelines

Before installing the Wall Mount, please beware of the following guidelines.

- 1 The wall to which the Wall Mount is mounted must have a load capacity of double the weight of the touchscreen.
- 2 The maximum load of this Wall Mount is 150 kg.
- 3 Clear the wall from any obstacles. To prevent the risk of entrapment, a minimum distance of 10 cm to the left and right of the screen and a minimum of 12 cm below it must be respected between the screen and any other objects around it such as accessories, whiteboards and keyboard holders.

Where can I go if I have questions?

In case you have any additional questions about the installation or use of the Wall Mount, our colleagues at the Customer Service department are happy to help.

✉ Please send an email to: service@prowise.com

☎ Call to: +31 (0)800 5021

📞 Send a WhatsApp to: +31 612 291 893

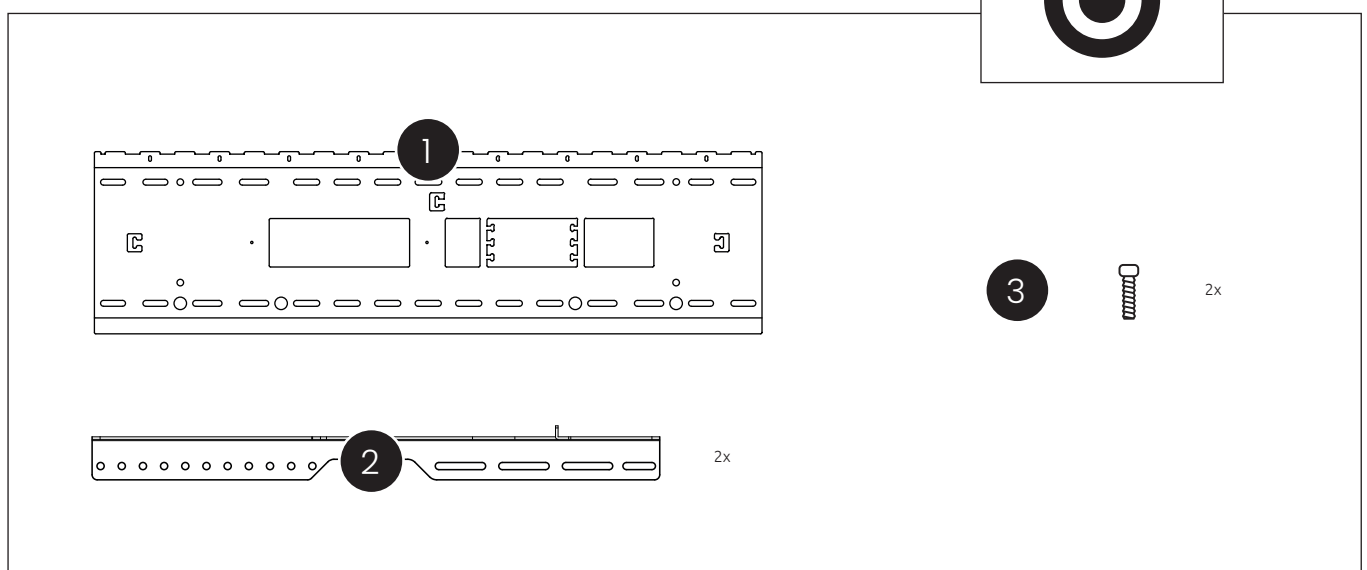
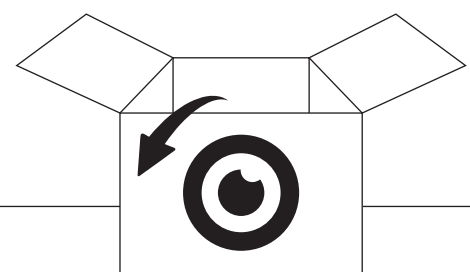
Safety requirements

Please read the supplied Safety Guide carefully before installing and using the Wall Mount. Please follow warnings and instructions closely and always keep the Safety Guide and User Manual at hand.



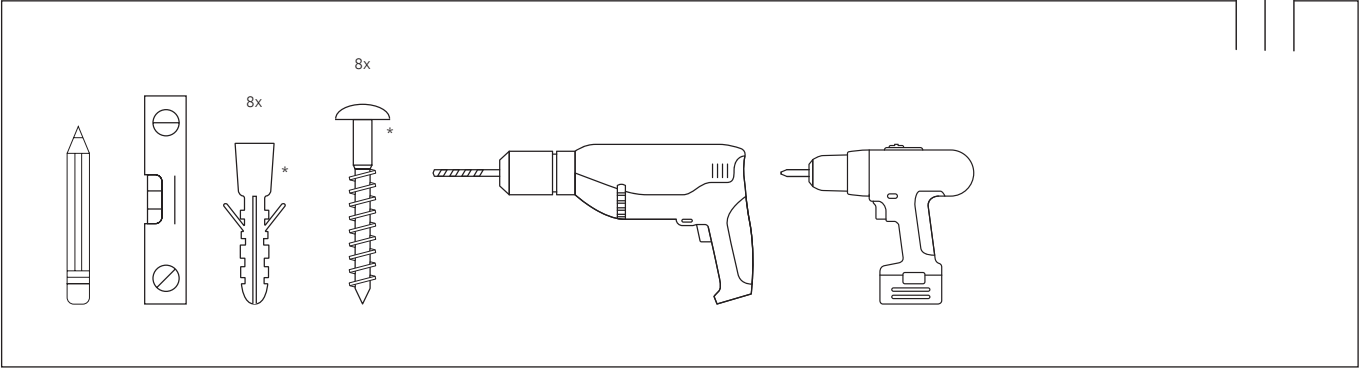
What's in the box?

- 1 Main Module
- 2 2x Vesa brackets
- 3 2x M6X80 hexagon socket screw



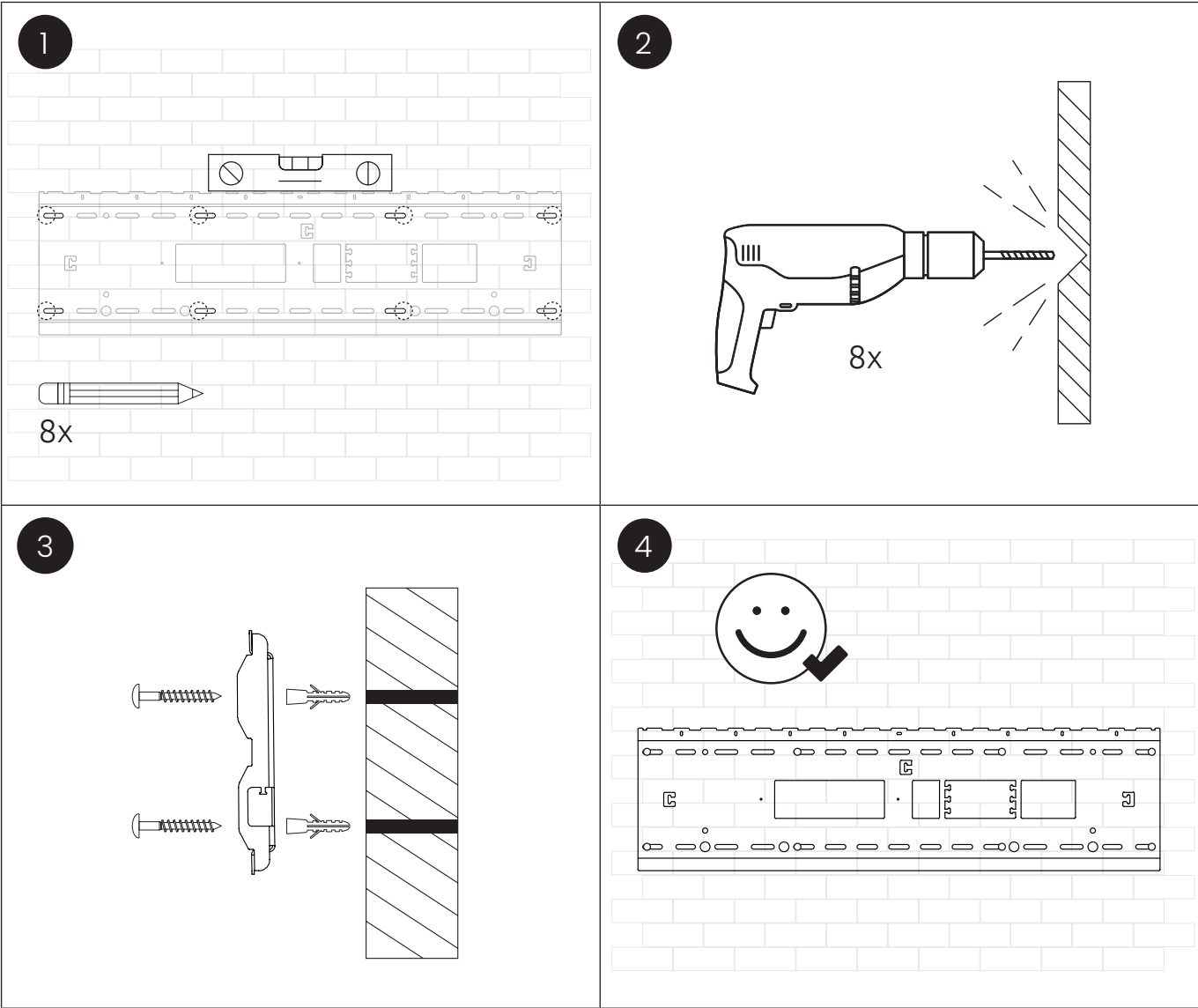
Technical installation of the Wall Mount

Tools you need



* Appropriate screws (11x) and potentially plugs (11x) for the relevant wall.

Installation



Technical installation of the touchscreen on the Wall Mount

Tools you need

