

EN

DE

NL

FR

IT

ES

PT

NO

DA

SV

FI

CY

PL

CS

SK

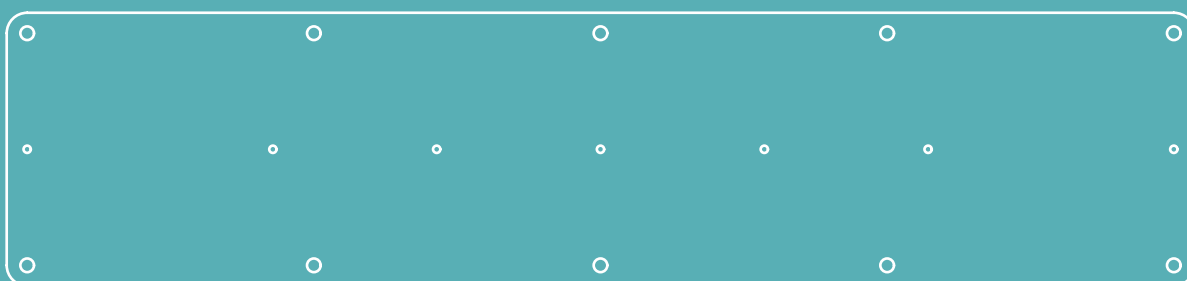
RO

HU

LT

LV

ET



User Manual

Prowise Neo Reinforcement Plate for weak walls

PW.1.21001.0010

PrOwise

Installation guidelines

Before installing the Reinforcement Plate, please beware of the following guidelines.

- 1 The wall to which the Reinforcement Plate is mounted must have a load capacity of double the weight of the touchscreen.
- 2 The maximum load of this Reinforcement Plate is 150 kg.
- 3 Clear the wall from any obstacles. To prevent the risk of entrapment, a minimum distance of 10 cm to the left and right of the screen and a minimum of 12 cm below it must be respected between the screen and any other objects around it such as accessories, whiteboards and keyboard holders.

Where can I go if I have questions?

In case you have any additional questions about the installation or use of the Reinforcement Plate, our colleagues at the Customer Service department are happy to help.

- ✉ Please send an email to: service@prowise.com
- ☎ Call to: +31 (0)800 5021
- 📞 Send a WhatsApp to: +31 612 291 893

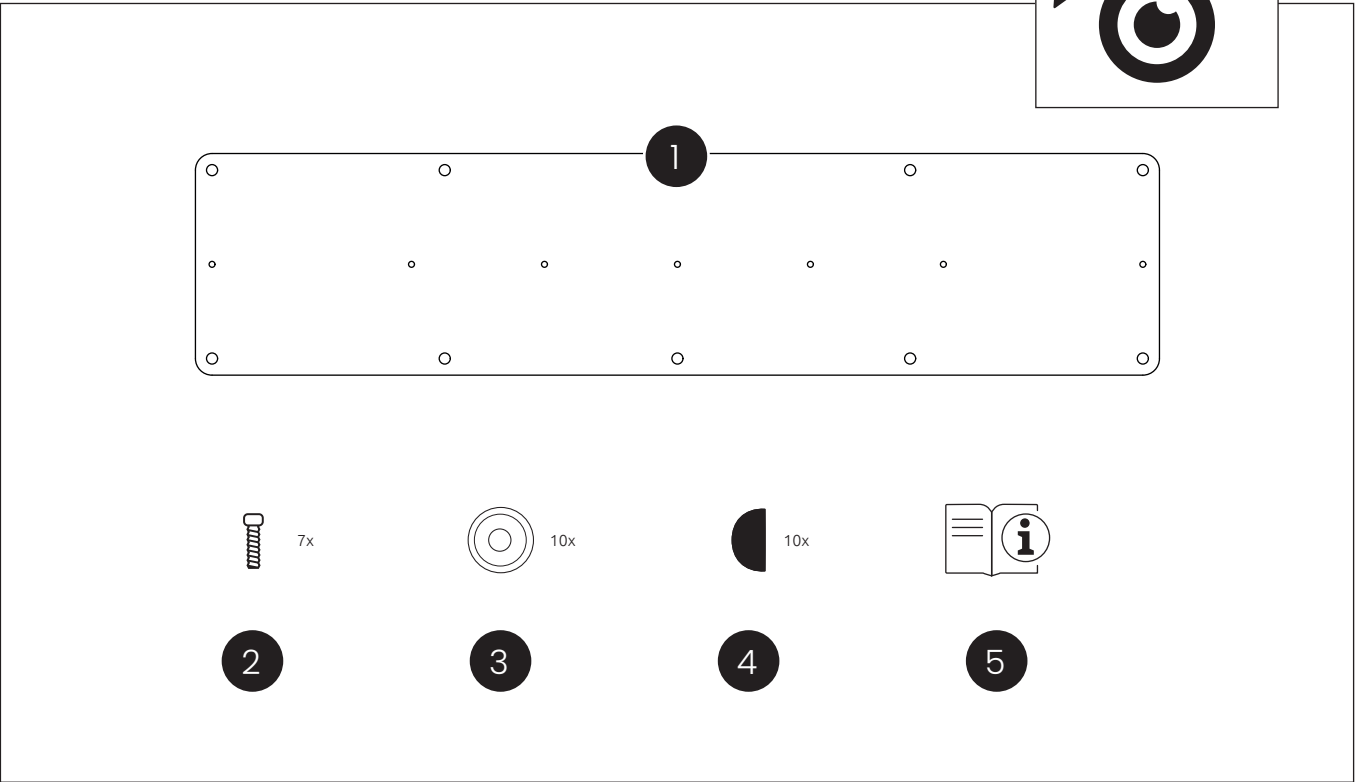
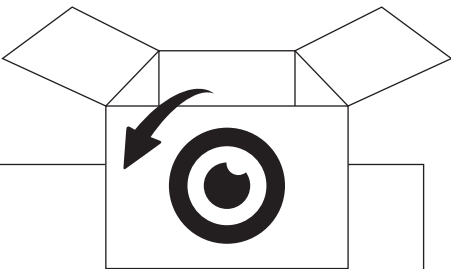
Safety requirements

Please read the supplied Safety Guide carefully before installing and using the Reinforcement Plate. Please follow warnings and instructions closely and always keep the Safety Guide and User Manual at hand.



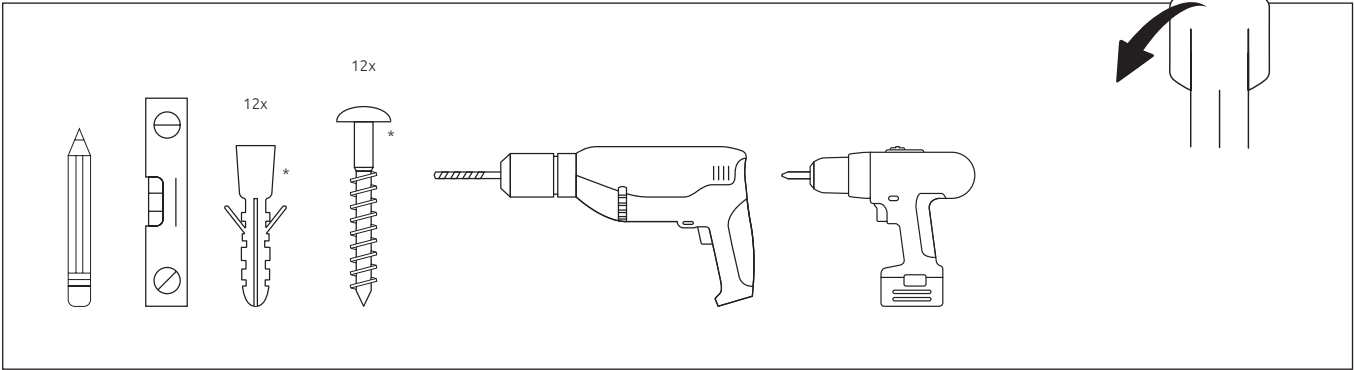
What's in the box?

- 1 Reinforcement plate
- 2 7x M6 X 10 hexagon socket screw
- 3 10x Ring for finishing cap
- 4 10x Finishing cap
- 5 User manual



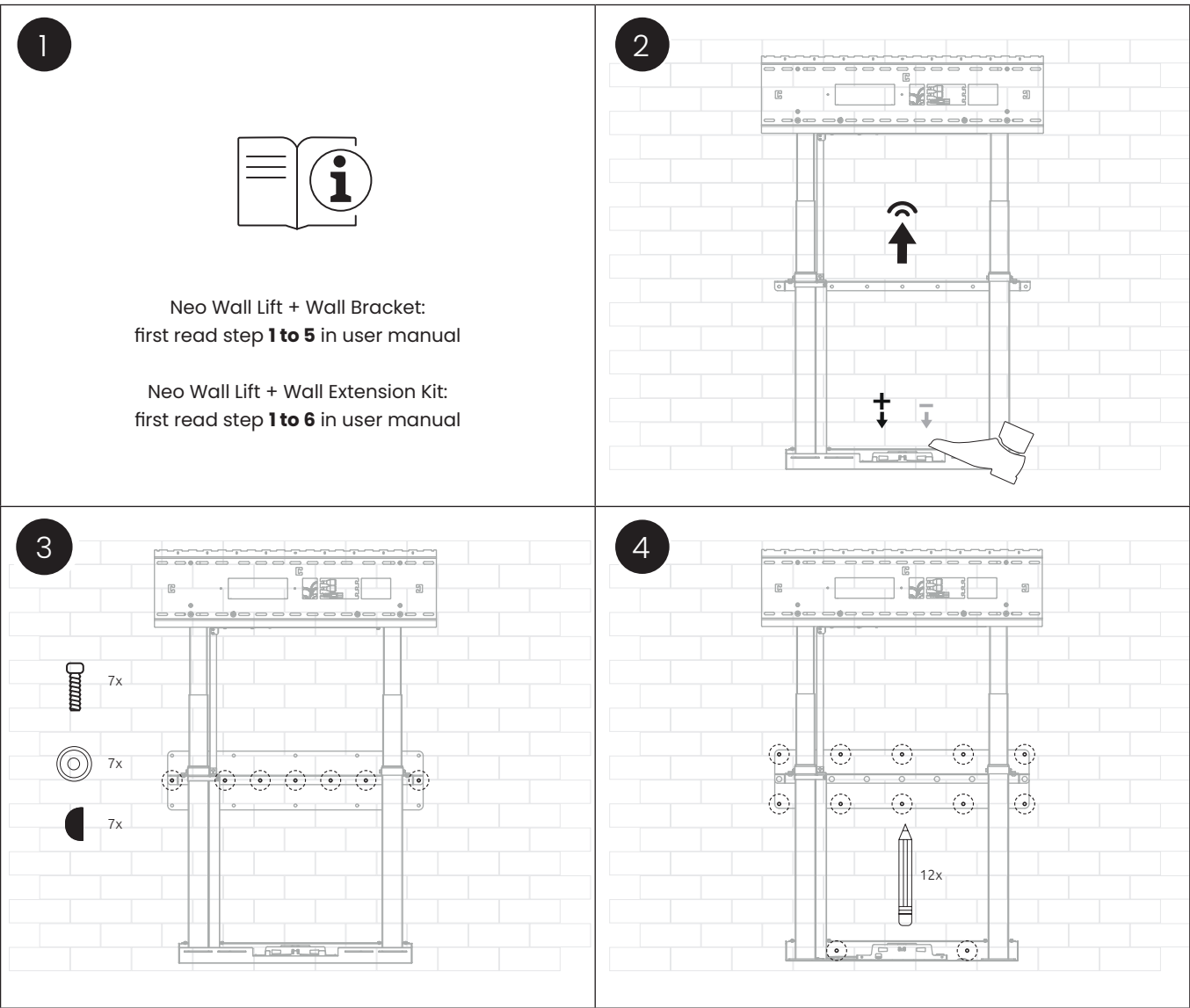
Technical installation of the Reinforcement Plate

Tools you need

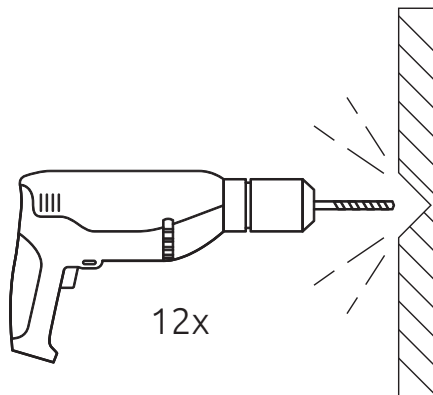


* Appropriate screws (12x) and potentially plugs (12x) for the relevant wall.

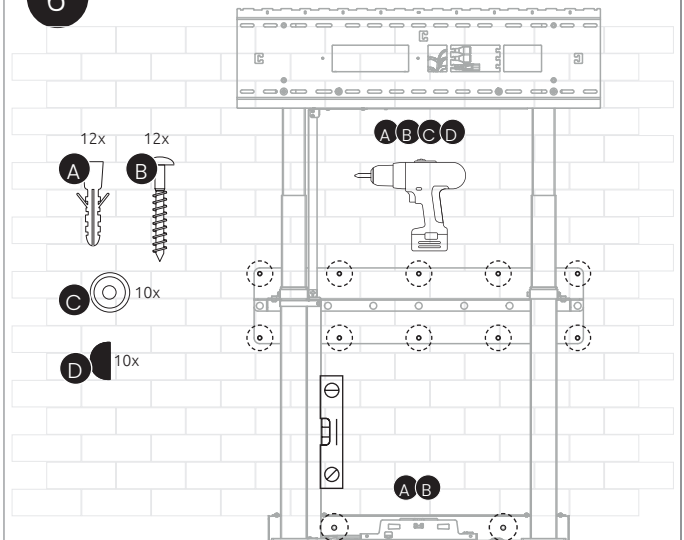
Installation



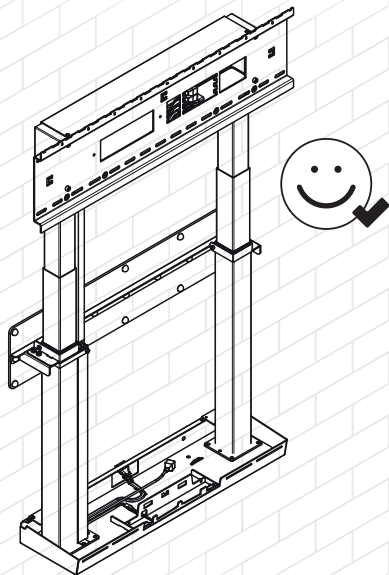
5



6



7



8



Neo Wall Lift + Wall Bracket:
continue with step **9 to 12** in user manual

Neo Wall Lift + Wall Extension Kit:
continue with step **12 to 16** in user manual