



# Contents

|   |           |
|---|-----------|
| <b>Contents</b>   | <b>2</b>  |
| <b>Introduction</b>   | <b>3</b>  |
| Becoming familiar with your product                                       | 4         |
| Scope of delivery   | 5         |
| Guidelines for the installation of the Prowise iPro Toddler and Tilt Lift | 6         |
| Safety requirements   | 7         |
| Guidelines for use  | 7         |
| Product specifications  | 8         |
| <b>Get started</b>  | <b>10</b> |
| Initialising the lift   | 10        |
| Lift usage  | 12        |
| Moving the lift   | 14        |
| Cleaning the lift   | 14        |
| Defects   | 15        |

# Introduction

The Prowise iPro Toddler/Tilt Lift adds value to your classes and makes your touchscreen even more innovative and accessible for all. Operating the system with your foot and Prowise Central ensures that you can direct your undivided attention to the screen. This lift system is the safest in existence. And in this combination, it is a pioneer on global scale.

This manual has been created based on the current technical specifications of the lift. We are continuously developing our lift systems, which means that we reserve the right to implement potential technical modifications.

## Becoming familiar with your product

Easily adjust the height and tilt angle of your touchscreen by using the Prowise iPro Tilt and Toddler Lift.



Adjustments up/down



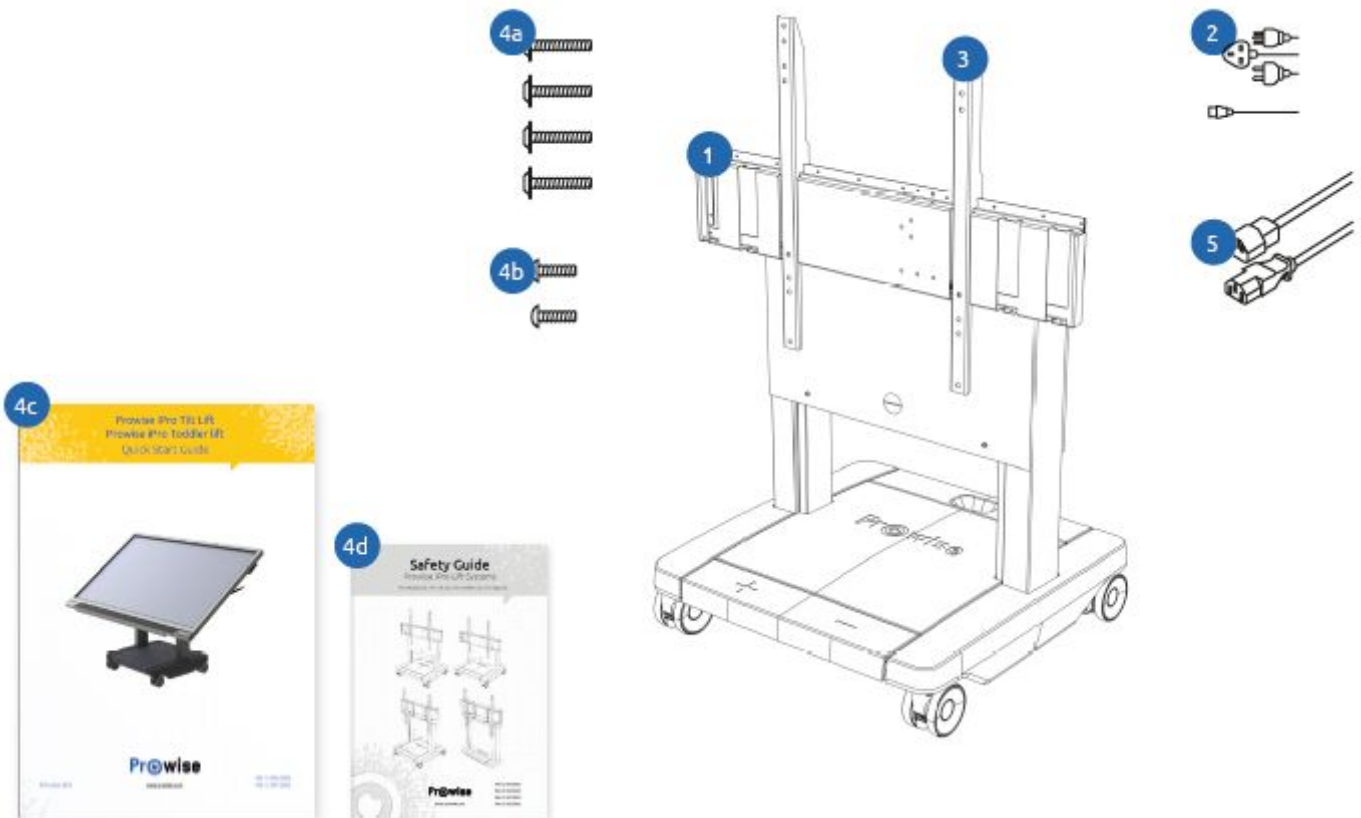
Adjustments horizontal/vertical

The wheels are always locked, unless the lift is in its lowest position. This means that the lift can be moved only when it is in its lowest position.

## Scope of delivery

Check the delivery for completeness. Should component parts be missing, please contact our service desk within five (5) days. The contact information for our service desk can be found on our website, [www.prowise.com](http://www.prowise.com). Please keep your serial number and a copy of the invoice readily available.

1. Prowise iPro Toddler or Tilt Lift
2. AC connection cable
3. VESA clamps (2 units)
4. Assembly bag:
  - a. M8x20 hex bolts (4 units)
  - b. M5x25 hex bolts (2 units)
  - c. Assembly Guide
  - d. Safety Guide
5. AC extension cord for touchscreen



## Guidelines for the installation of the Prowise iPro Toddler and Tilt Lift

Only Prowise or a partner certified by Prowise is authorised to install and mount the touchscreen on the Prowise iPro Toddler and Tilt Lift. Prowise is not liable for damages and/or trauma caused by assembly carried out by a third party. The warranty will lapse if the lift or the touchscreen are installed or assembled by third parties.

- The maximum load of the Prowise iPro Tilt and Toddler Lift is 75 kg.
- The power supply must be provided with voltage overload protection and an available current of 6A.
- Connect the power cord to a earthed socket with AC 100-240V~50/60Hz only. Consult your energy company if you are unsure about the power supply at the installation site.
- Use only the connection cord and plug supplied.
- Read the safety instructions before assembling the Prowise iPro Toddler or Tilt Lift

## Safety requirements

Please read the supplied Safety Guide before installing and using the Prowise iPro Tilt/Toddler Lift. Please follow warnings and instructions closely and always keep the Safety Guide and Assembly Guide at hand.

## Guidelines for use

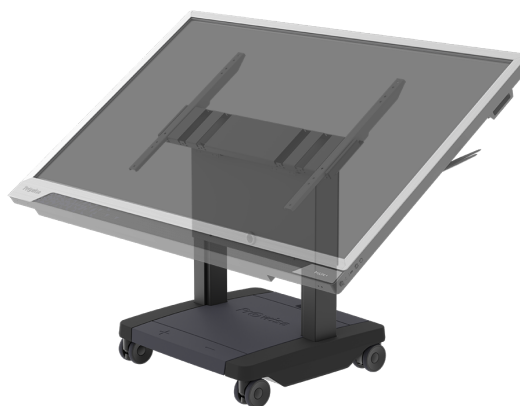
The Prowise iPro Tilt or Toddler Lift has been designed such that it can be used and maintained safely. Activities that are not described in the user manual, may only be conducted by professionals. The iProToddler/Tilt Lift is not suitable for use in the open air or an environment that has a high explosion hazard.

### Warning!

- It is crucial that anyone connecting, installing or using this lift, has access to the necessary information and this user manual.
- Follow the assembly instructions to avoid potential injury.
- Only connect the iPro Toddler/Tilt Lift to a grounded outlet with AC 100 - 240V, 50 - 60Hz.
- Do not place liquids on or around the lift.
- Never open the electrical component box. By doing so, the user can be exposed to lethal electrical shocks. The electrical components must not be serviced by the user.
- Always unplug the power cord during thunderstorms. In relation to extra safety measures we recommend to use a surge protector to protect the connected touchscreen from damage caused by voltage peaks or lightning strikes to the electricity network.
- The maximum load of this lift amounts to 75 kgs.
- The lift is not suitable to be used by young children or minors without supervision. Do not use the lift for playful purposes.
- Caution! The risk of becoming stuck is always present, and unavoidable due to the functioning of the lift.

## Product specifications

Adjust height and angle of the touchscreen and move it to any location. Due to the tilt option the touchscreen can also be used as a touch table. The Tilt/Toddler Lift is able to descend such that even the shortest students can participate.



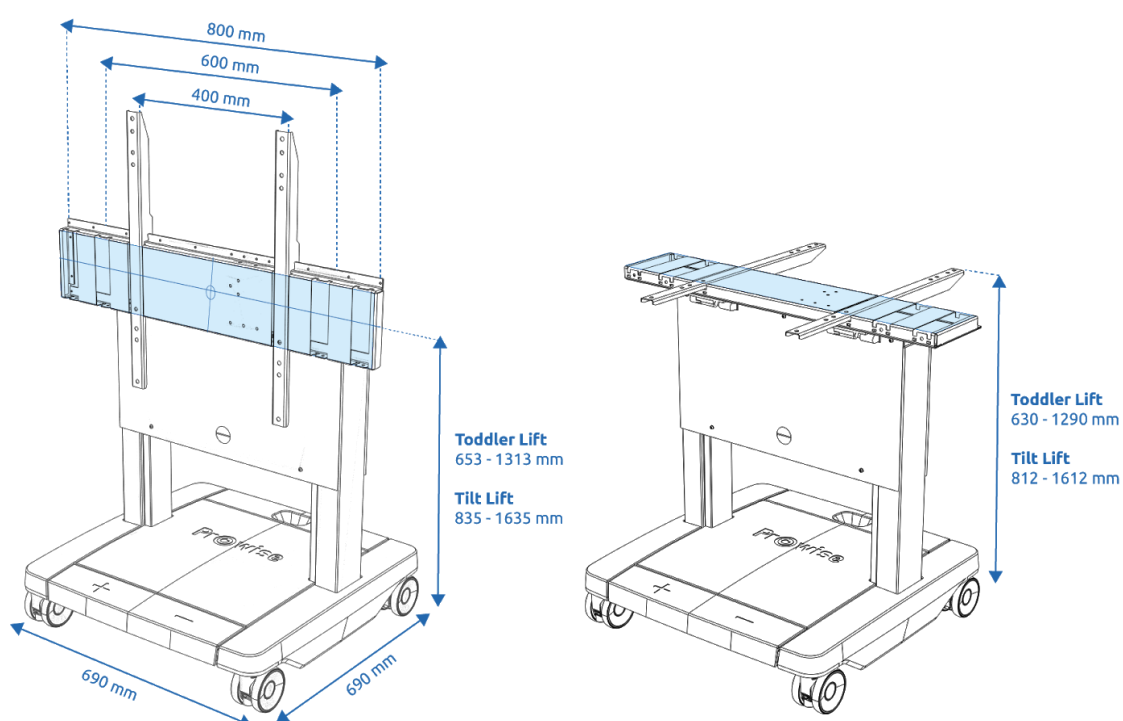
iPro Toddler Lift PW.1.21007.0002

iPro Tilt Lift PW.1.21005.0003

|  |   |
|--|---|
| Suitable for                                   | Prowise touchscreens up to 65 inch,<br>Maximum dimensions VESA mount 800 x 600 mm |
| Dimensions ground surface (WxDxH)              | 690 mm x 690 mm x 160 mm  |
| Maximum load                                   | 75 kg   |
| Speed of the lift                              | 38 mm /s  |
| Power  | 100-240V AC 50-60Hz (universal)   |
| Stand-by power consumption                     | 0,1 Watt  |
| Duty cycle columns                             | 5%  |
| Soft-start and soft-stop                       | Yes   |
| Noise level                                    | Low, standard < 55 dB (A)   |
| Protection against overload (EOP)              | Yes   |
| Columns with integrated anti-collision sensors | Yes, PIEZO™ sensoren  |
| Material                                       | Steel/ABS   |
| Colour   | Steel = RAL 9005 / ABS = anthracite/black   |
| Touchscreen control via Prowise Central        | Yes, USB connection   |
| Foot controller                                | Yes   |
| Remote control                                 | Yes   |
| Wheels   | Double safety wheels, 110 mm, made of polyamide                                   |



|   |   |
|---|---|
| Certifications                            | CE  |
| Warranty                                  | 5 year  |
| Gross weight                              | 64 kg (iPro Toddler Lift)<br>70 kg (iPro Tilt Lift) |
| Net weight                                | 55 kg (iPro Toddler Lift)<br>62 kg (iPro Tilt Lift) |
| Dimensions of the total packaging (WxDxH) | 887 mm x 712 mm x 780 mm                            |



## Get started

When the iPro Toddler/Tilt Lift has not been used for an extended period of time, it needs to be initialised.



The pillars are provided with a PIEZO™ sensor. This ensures that the upward and downward movement of the lift comes to an automatic halt once an obstructing object is detected. The lift will automatically move in the opposite direction. The system also increases the personal safety to some extent, but does comply not with legislation regarding personal safety.

## Initialising the lift

### Initialisation of the height movement of the lift

- Place the lift in the lowest position by pressing the down button of the handheld or foot control panel.
- Once in the lowest position, again press the down button and continue to hold the button until the lift has moved automatically a further 3 mm and then withdrawn. This takes no longer than 5 seconds.
- Release the down button only when the lift has come to a complete standstill.
- If the down button is released before the lift has stopped, initialisation will be interrupted and the process must be restarted.
- The columns are now initialised and ready for use.

### Initialisation of the tilt function

- Place the screen in a horizontal position by pressing and holding down the tilt down button of the manual control panel.
- Once in the lowest position, again press the tilt down button and continue to hold the button until the screen has moved automatically a further 3 mm and then withdrawn. This takes no longer than 5 seconds.
- Release the tilt down button only when the lift has come to a complete standstill.
- If the tilt down button is released before the screen has stopped, initialisation will be interrupted and the process must be restarted.
- The tilt function of the lift is now initialised and ready for use.

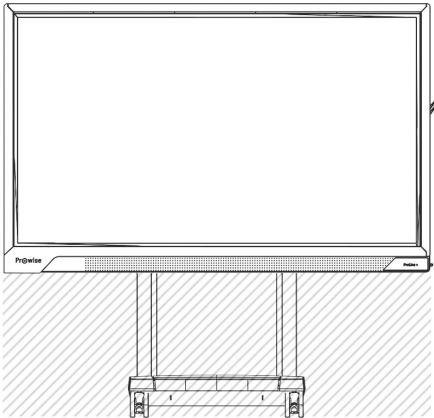


If the down button is released before the lift has stopped, initialisation will be interrupted and the process must be restarted.

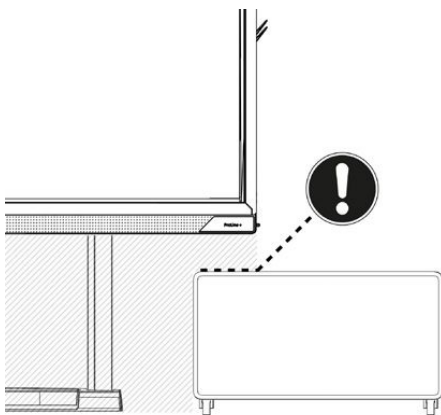


Initialising regularly improves the durability of the lift system.

## Lift usage

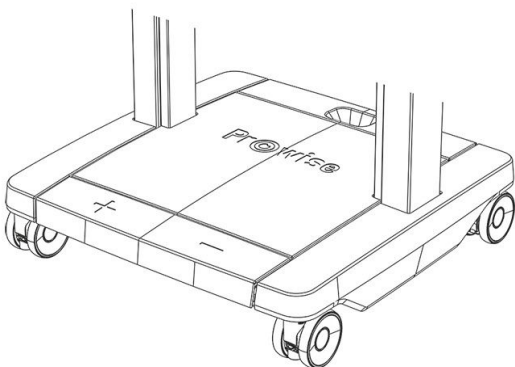


The motion area must be free of obstacles. Ensure that objects or body part cannot get trapped between another object and the lift or the touchscreen.

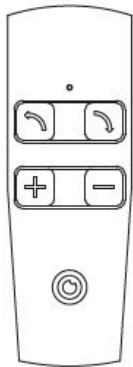


The lift is equipped with anti-collision sensors that automatically stop it from moving once it is in collision with an obstruction. This prevents damage to the lift and the touchscreen mounted upon it.

**CAUTION! This is not a person protection feature.**



Set the touchscreen to the desired height by pressing the up or down buttons on the foot control panel.



Set the touchscreen to the desired height by pressing the up or down button on the manual control panel. Set the screen in a vertical or horizontal position with the tilt button.



Or set the touchscreen to the desired height or inclination by using the lift control panel in Prowise Central.



**CAUTION! This application is only supported in Prowise touchscreens in which Prowise Central has been integrated.**

## Moving the lift

Take the following guidelines into account when moving the Prowise iPro Toddler and Tilt Lift:

- Set the lift in the lowest position and ensure that the screen is in a vertical position so that it can be moved.
- Roll up the power cord to ensure it is not dragged across the floor or is left in the lift's walkway. This mitigates the danger of stumbling as well as damage to the connecting cable.
- Make sure that no objects are left or persons are within the lift's walkway.
- At least two people should be on hand to move the lift.
- Only move the lift over a stable, flat surface.
- Ensure that the lift does not come into collision with anything while being moved. This prevents damage to the lift, the touch screen attached to it and the surrounding area.
- The lift must be initialised after being moved. This prevents damage and extends the lifespan of the lift.

## Cleaning the lift

Ensure that the cleaning of the lift is conducted by an adult. Children are only allowed to clean the lift under supervision. The cleaning and disinfecting agents must never be too alkaline or acidic (pH 6 to 8). Never apply the cleaning agent directly to the lift; always use a cloth. Preferably clean the lift with a dry cloth.

## Defects

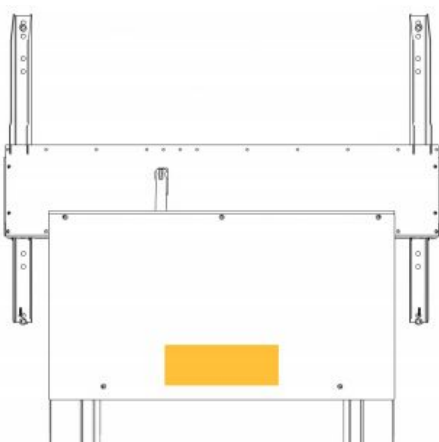
It is important to always consider safety during a malfunction of the lift. Servicing a dually-isolated product requires extreme care and expertise of the system and can only be conducted by a Prowise professional or Prowise-certified partner. Replaced components must be identical to the original parts.

A defect can have various causes. In case of a defect, try the following:

- Check if all the cables are connected
- Initialise the lift (see page 9, "Initialising the lift")
- Unplug the cord from the outlet for 2 minutes and reconnect.

If the defect remains, please get in contact with the Prowise service desk via [service@prowise.com](mailto:service@prowise.com) or 0800-5021. Write down the following details:

- Name lift (see type bar)
- Serial number (see type bar)
- Type of defect/malfunction (potentially attach a picture)



Position type bar



Type bar