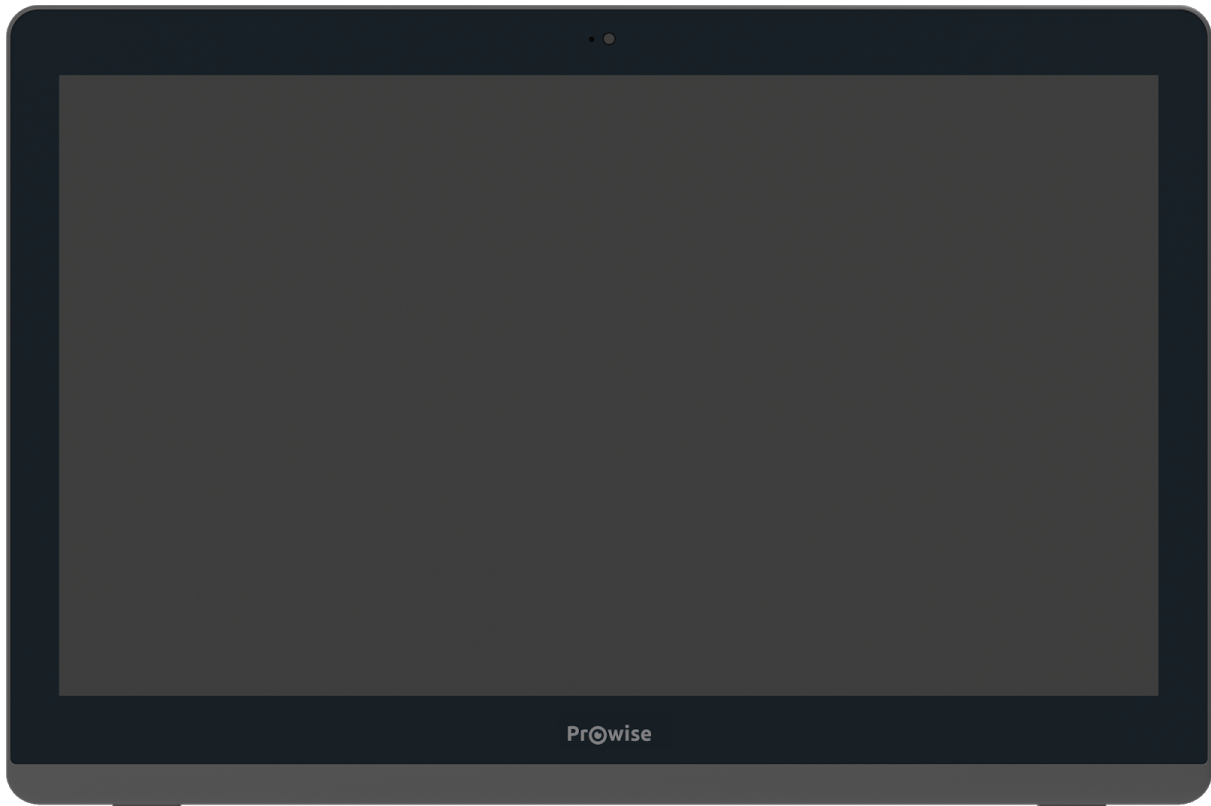


All-in-One PC - Manual



The Prowise All-in-One PC is a computer as well as a tablet. You can use this versatile device for any situation in the classroom. The integrated battery and the fact that you can lay the screen flat on the table, is what makes the Prowise All-in-One PC unique. This way, you can use the Prowise All-in-One as a PC, as well as a powerful tablet for small group exercises.

Create a Microsoft account and gain access to all applications (apps) in the Microsoft Store. New apps can be downloaded or existing apps can be updated here.



Disclaimer

The functions and features described in this user guide apply to most of the models. It is possible that not all the functions and features are available on this model.

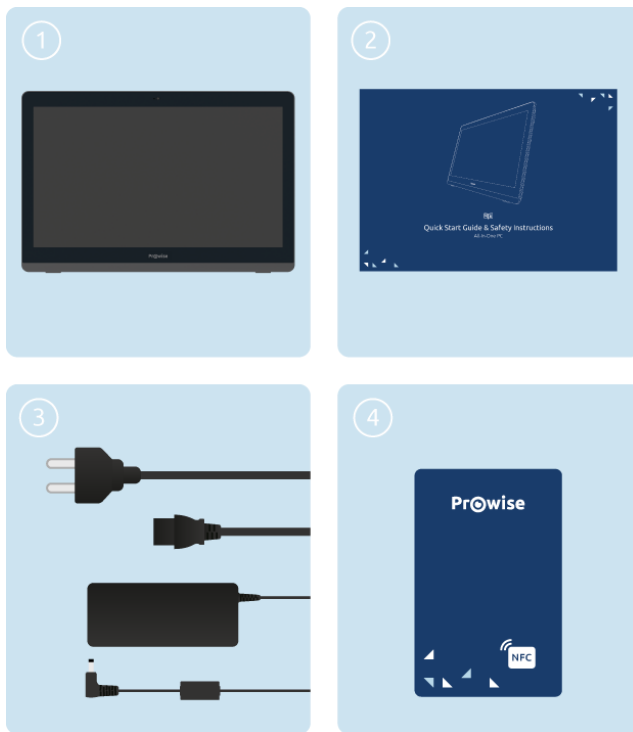
By installing, downloading or otherwise using the software product that has been pre-installed on the All-in-One PC, you agree with the terms and conditions of the relevant software manufacturer.

Table of Contents

1. Get to know your All-in-One PC	4
1.1 In the box	4
1.2 Front	5
1.3 Back	6
1.4 Labels	7
2. Using your All-in-One PC	8
2.1 Touchscreen	8
2.2 NFC card	10
3. Charger & Battery	11
3.1 Charger	11
3.2 Battery	11
4. Cleaning your All-in-One PC	12
4.1 Cleaning the screen	12
4.2 Cleaning the casing	12
5. Prowise	13
5.1 Prowise Presenter	13
5.2 Touchscreens & Personal Devices	13
Get started with the Prowise Chromebooks instantly	14
Notebooks are prepared for anything	14
All-in-Ones that can actually do everything	14
6. More information	16
6.1 Wireless LAN	16
6.2 VPN	16
6.3 Bluetooth	16

1. Get to know your All-in-One PC

1.1 In the box



1. Prowise All-in-One PC
2. Quick Start Guide & Safety Instructions
3. Adapter with power cord
4. NFC Card



PLEASE NOTE! Check whether the delivery is complete. If not, please contact our service desk in writing within five days after delivery. Please advise the serial number and a copy of the packing slip.



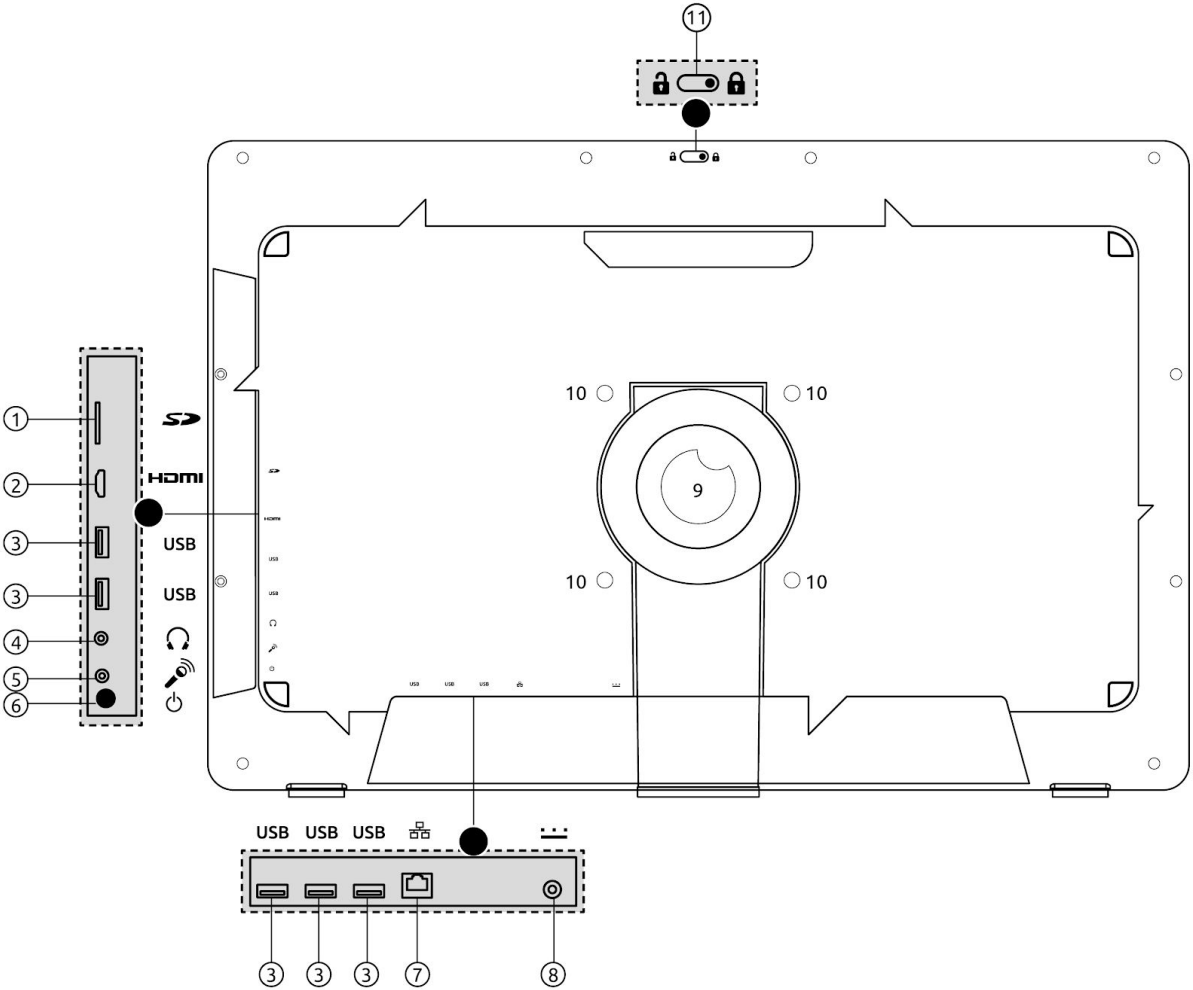
DANGER! Keep the packaging material, such as the foils, out of the reach of children. Improper use can cause suffocation hazard.

1.2 Front



1	Camera	You can record videos, take photos or hold a video conversation with the camera.
2	On/Standby indicator	This LED indicator shows whether your All-in-One PC is in standby mode or switched off.
3	Microphone	The internal microphone enables audio recording in the All-in-One PC.

1.3 Back

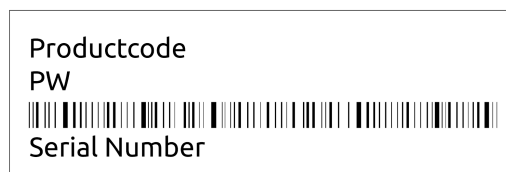


1	MicroSD card reader	You can read SD cards directly by placing them in the card reader (with the connectors aimed towards the back of the All-in-One PC).
2	HDMI 1.4	You can connect an HDMI cable to project audio and/or video from the All-in-One PC to a second screen.
3	USB 3.0	A USB 3.0 port transfers data quickly, or can connect devices such as mobile phones, a camera or a smartwatch.
4	Audio	3.5mm port to plug in headphones.

5	Microphone port	3.5mm port to connect microphone
6	ON/OFF button	Switch your All-in-One PC on or off
7	Ethernet	You can connect an Ethernet cable if you want a fixed internet connection (1GBps)
8	AC Power	Here you can plug in the adapter to charge the All-in-One PC.
9	Stand	You can use the All-in-One PC in different angles (ranging from 90° to 130°) by adjusting the stand to the desired position. In addition, you can fold up the stand entirely so you can safely place the screen on a flat surface.
10	VESA mount option	The four screws allow you to assemble the All-in-One PC to a VESA mount (100 mm x 100 mm). BEWARE: the VESA mount is not supplied by Prowise on default.
11	Camera cover	You can slide the cover over the camera to safeguard privacy.

1.4 Labels

The labels of the Prowise All-in-One PC can be found underneath the stand at the back. If you want to read the labels, you need to completely unfold the stand first.



Label

Labels provide important information in terms of identifying your All-in-One PC. For instance, you can find information such as the serial number, product number or Prowise details you need in case you contact the Prowise customer service.

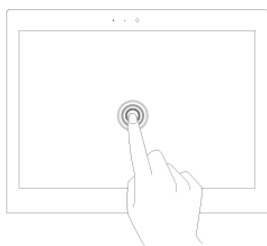
2. Using your All-in-One PC

The Prowise All-in-One PC is a computer as well as a tablet. You can use this versatile device for any situation in the classroom. Teach, divide students into small working groups or enable somebody to carry out exercises independently.

You can use the All-in-One PC in various situations. You can adjust the screen angle from 90° to 130° with the stand. In addition, it is possible to fully fold up the stand and lay the All-in-One PC flat on the table, ensuring that the screen can be placed safely on a stable surface.

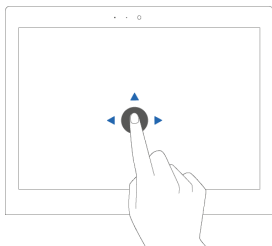
2.1 Touchscreen

The All-in-One PC is fitted with a touchscreen and has a few specific gestures to control and operate the screen.



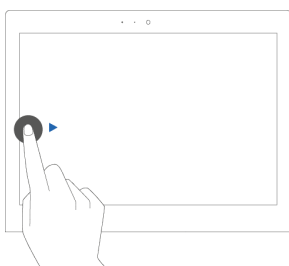
Click

Tap on the screen.



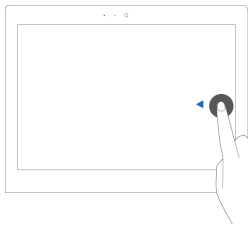
Drag

Press and hold your finger down on an item and drag it to the desired location without lifting your finger off the screen.



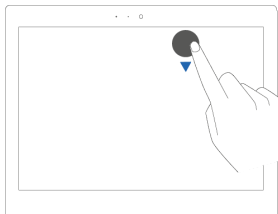
Display all opened windows

Swipe from the left-hand side of the screen to the right.



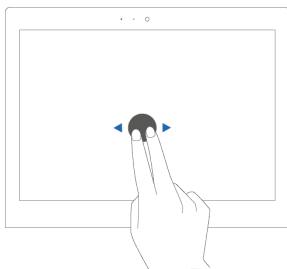
Display action menu

Swipe from the right-hand side of the screen to the left.



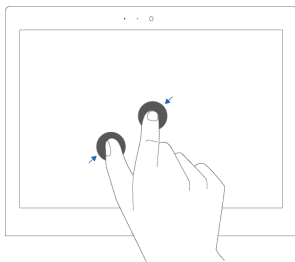
Close full screen

Swipe down from the top of the screen.



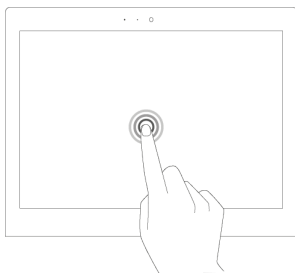
Swipe

Swiftly use two fingers to swipe left to go to the previous webpage and right to go to the next. The same applies for apps.



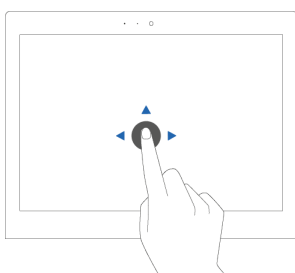
Zooming in / zooming out

Move two or more fingers towards each other and away from each other to zoom out or in



Right-click (context menu)

Press and hold down the item you want to select for several seconds to activate the right-click menu.



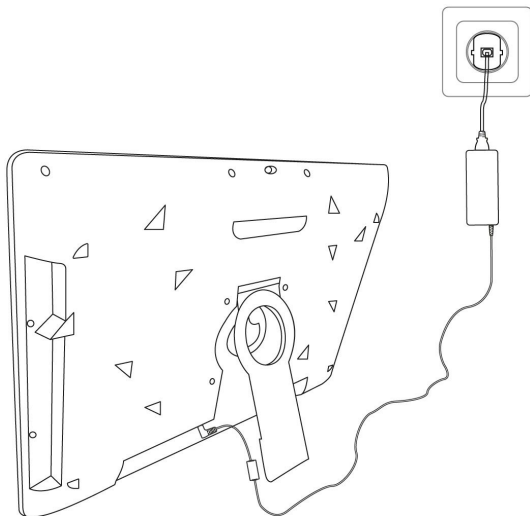
Scroll

Press and hold down one finger on the screen and drag towards the direction you want to scroll.

3. Charger & Battery

3.1 Charger

To charge your All-in-One PC, only use the adapter that was supplied with your device. Plug the charger in the power outlet and then into the All-in-One PC through the AC Power (charger port(8)).



PLEASE NOTE! Only plug the power cable into grounded electrical outlets with AC 100-240V ~,50-60Hz. Consult your energy company if you are unsure about the power supply at the installation site.

3.2 Battery

The All-in-One PC has an internal battery. This battery is integrated in the casing and can only be removed or replaced by qualified personnel.



PLEASE NOTE! In case the battery is replaced by a third party, the warranty lapses. In case of battery defects, always contact Prowise or a certified Prowise partner. Contact details are available at www.prowise.com

4. Cleaning your All-in-One PC

4.1 Cleaning the screen

Cleaning the screen

Use a soft, dry and lint-free microfibre cloth to clean the screen. Double check whether the cloth is actually clean.

If you want to use a cleaning agent, only use one recommended by Prowise. Under no circumstance use aggressive chemical cleaning agents. because they can damage the screen.

Always apply the cleaning agent to a cloth first. Never apply it directly to the screen of the All-in-One PC. The cloth can be slightly moist, certainly not wet. This can cause damage to the All-in-One PC.

Carefully wipe the screen with the lint-free cloth. Do not apply excessive pressure, for this can damage the screen. For the optimal result, gently wipe the screen using circular motions. Never use an abrasive cleanser.

4.2 Cleaning the casing

Use a soft, dry and lint-free microfibre cloth to clean the casing of the All-in-One PC. Make sure this cloth is free of any impurities and that the All-in-One PC is switched off.

Always apply the cleaning agent to a cloth first. Never apply it directly to the casing of the All-in-One PC. The cloth can be slightly moist, certainly not wet. This can cause damage to the All-in-One PC.



PLEASE NOTE! Always disconnect all cables leading to the All-in-One PC before cleaning, including the power cable.



WARNING! Should the All-in-One PC get wet, do not switch it on or plug the charger in the power outlet. This can cause electric shocks. In case the All-in-One PC is already switched on, turn it off immediately and unplug the charger before drying the All-in-One PC in order to avoid a short circuit.

5. Prowise

Together with you, Prowise aims to achieve better education. Therefore, together with our passionate team, Prowise continues to develop software and hardware solutions that make an actual difference in the classroom.

5.1 Prowise Presenter



Thanks to Prowise Presenter, lessons and presentations can be created quickly, easily and interactively. Presenter is packed with educational content and interactive options for teachers (instruction), groups (collaborative learning) and students (processing). For both primary and secondary education. Consider, for example: images, videos, tools, Touch Table tools and 3D models, but also ready-made curriculum strands, quizzes and mind maps. Prowise Presenter is the education software that is used by over 400,000 users to easily create interactive lessons.

Teach and let students get started with Prowise Presenter. It offers many possibilities for both teacher and student: create lessons or essays, work with innovative tools and explore 3D models.

The entire Prowise Presenter version is free for all users.

For more information, please consult www.prowise.com/en/presenter-software

5.2 Touchscreens & Personal Devices

With the Prowise Touchscreen, you can carelessly enjoy the world's highest audiovisual quality. The top-of-the-line materials in combination with the hardware and software developed by Prowise for unique education and presentation possibilities. Prowise Touchscreens are available in the sizes 55", 65", 75" and 86".

- The 4K Ultra HD IPS Panel guarantees the best possible visual experience. Only the very best top-quality LG panels are used for this purpose.
- The fully-integrated 2.1 soundbar ensures crystal clear sound. The two integrated speakers (at the front) and subwoofer (at the back) are certified as Dolby Digital.

- The four microphones integrated in the Prowise Touchscreen recognise voices and people from as far away as 8 metres. This means you can invite external experts to your class via Skype or similar VoIP applications and let students communicate with him or her through the touchscreen.
- With the two ergonomic pens, two students can simultaneously complete exercises or other tasks on the Prowise Touchscreen. The pens remember two colours (front and back) and provide a smooth and realistic writing experience.

For more information, please consult www.prowise.com/en/touchscreens

In addition, you can further expand the functionality and possibilities of your touchscreen by combining the Prowise Touchscreen with the Prowise iPro lift. Prowise iPro Lift Systems have been developed with the fundamental purpose of usability.

- Safety is provided by the brake that is automatically applied once the screen is no longer in its lowest position. Sensors recognise obstacles when the lift moves up and down. The lift stops immediately once the sensors detect resistance.
- Prowise offers several lift systems, each for different situations, thus safeguarding usability. For instance, the Tilt & Toddler lift offers the possibility to set the touchscreen to table mode, enabling even the shortest pupils to participate.

For more information, please consult www.prowise.com/en/prowise-ipro-lift-series/

The Prowise personal devices are exceptionally suitable for secondary education. All devices have been designed specifically for classroom use, with features and functionality that optimally support the Prowise software. Due to the robust casing and the rapid WiFi connection, using software such as Prowise Connect is easy, enabling you to smoothly switch between different devices. Prowise has developed several types of devices, each with their own user applications.

Get started with the Prowise Chromebooks instantly

Open up your Chromebook and it launches rapidly. Students log in with their own details and since the Prowise Chromebook operates in the cloud, they have direct access to documents. With Chrome OS, Google's operating system, you can get the most out of your Chromebook.

Notebooks are prepared for anything

Powerful notebooks, equipped with Windows 10, designed to be able to take a knock. Moreover, with Prowise notebooks you can easily collaborate via Office 365 and Microsoft Azure (cloud) via Windows.

All-in-Ones that can actually do everything

The Prowise All-in-One PC is a computer as well as a tablet. You can use this versatile device for any situation in the classroom. What makes the Prowise All-in-One stand out is that it has an integrated battery and can still be

laid flat on a table. This way, you can use the Prowise All-in-One as a PC, as well as a powerful tablet for small group exercises.

For more information, please consult www.prowise.com/en/personal-devices

6. More information

6.1 Wireless LAN

Use a WiFi connection to connect to a wireless network. A WiFi connection is required to use Prowise software such as Prowise Connect.

Make sure to check which WiFi network you have to connect to and to have the right password before installing your WLAN.

To connect the All-in-One PC to a WiFi network, click on the wireless internet icon in the bottom-right corner of the taskbar. Then select the network you want to connect to and enter the password.

For more information, please visit <https://www.prowise.com/en/support/>

6.2 VPN

With a VPN connection, you can connect to a private network, such as a school or work network. A VPN connection increases the safety of the connection between the company network and the internet.

Before connecting to a VPN, you need to create a VPN profile. This can be done in two ways:

- Create a VPN profile for yourself.
- Create a VPN profile for your work.

In case you do not have a VPN profile, you need to create one before being able to connect. You can find out how to do this on <https://www.prowise.com/en/support/>

6.3 Bluetooth

To switch on bluetooth on the All-in-One PC, click on the "roof" icon in the bottom-right corner of the screen in the taskbar. Click on the bluetooth icon to open the bluetooth menu and choose your desired option.